

Organoid
Wall Covering

asset
space becomes place

ORGANOID

NATURAL SURFACES

COLLECTION



Experience
& Enjoy.

See.



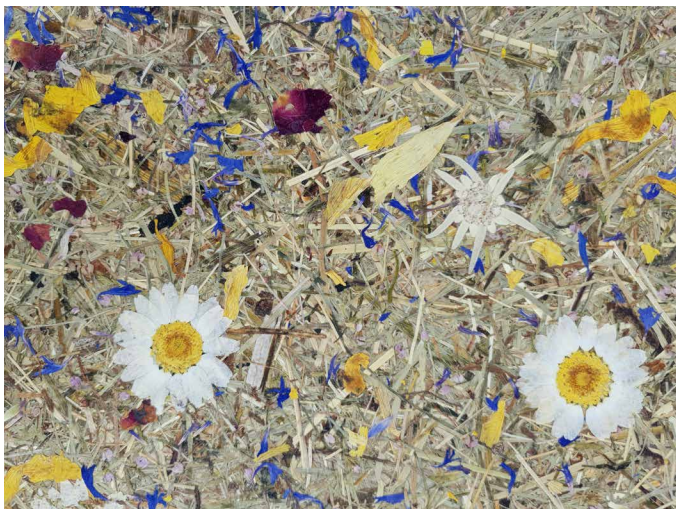
Feel.



Smell.

Storytelling.

Organoid® Natural Surfaces ...



BERGWIESN

alpine-hay from approx. 2,000 m above sea level with 6 edelweiss/m², 20 marguerites/m², petals of arnica, cornflower, heather and rose
WSPBRG0075 ▲ FVP ● FVS WSPBRG0090 ◆ HPL



WILDSPITZE MARGERITTA

alpine-hay with 4 marguerites/m²
WSPMAR0075 ▲ FVP ● FVS
WSPMAR0090 ◆ HPL



ALMWIESN

Tyrolean alpine-hay with 5 marguerites/m² and petals
WSPALM0075 ▲ FVP ● FVS
WSPALM0090 ◆ HPL

Where are the marguerites?

Unfortunately, we cannot fit a **marguerite** on each small sample. However, our bigger samples are finished with a **marguerite** or **edelweiss** – depending on the type of surface. We are happy to send you an **A5-sized sample**. Simply scan the **QR code** and discover our colourful collection!



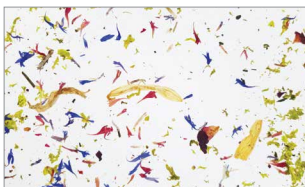
KORNBLUAMA light

loosely spread cornflower petals on white eco-fleece
KOBBLU2040 ● EVW



ROASNBLIATN light

loosely spread rose petals on white eco-fleece
ROABLI2040 ● EVW



BLIATNPRACHT light

loosely spread petals and moss on white eco-fleece
BLIPRT2050 ● EVW



WILDSPITZE light

loosely spread Tyrolean alpine-hay on white eco-fleece
WSP0002020 ● EVW



WILDSPITZE light

loosely spread Tyrolean alpine-hay on natural flax backing
WSP0002020 ▲ FVP



MOUS light

loosely spread light green moss (coloured) on white eco-fleece
MOSHGR2030 ● EVW



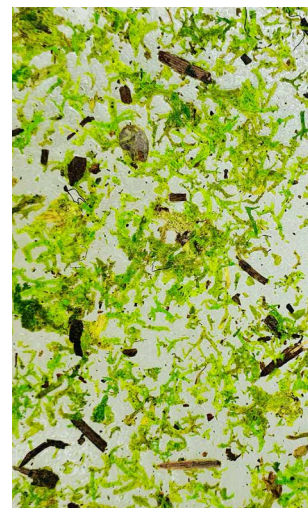
KAFEELEDER coffee powder as

vegan leather | size: 2,950 x 1,360 mm
KAF0000190 ◆ FLX



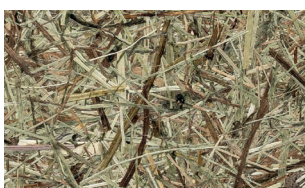
BLIATNPRACHT light

loosely spread petals and moss on natural flax backing
BLIPRT2050 ▲ FVP



MOUS HELLGRAN medium

upcycled light green moss (coloured) on translucent self-adhesive film
MOSHGR0045 ○ SKT



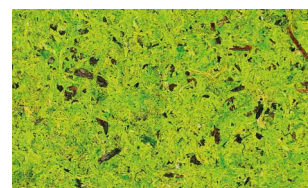
PUR SEALING on WILDSPITZE FLOORING

glue-down panel: WSP0000090 ◆ BKO
click panel: WSP0000090 ◆ BDN



SUNNABLUAMA

upcycled sunflower seed husks
SBL0000080 ◆ HPL



MOUS HELLGRAN

intense light green moss (coloured) size: 2,950 x 1,360 mm
MOSHGR0085
▲ FVP ● FVS ◆ HPL



www.organoids.com/en/products/finder/stock-collection



BERGWIESN medium
alpine-hay with 6 edelweiss/m²,
20 marguerites/m² and petals
WSPBRG0045 ○ SKT



WILDSPITZE medium
hand-cut Tyrolean alpine-hay
on translucent self-adhesive film
WSP0000045 ○ SKT



WILDSPITZE ROSENGARTEN
alpine-hay with highly fragrant rose petals
WSPROG0075 ▲ FVP ● FVS
WSPROG0090 ◆ HPL



WILDSPITZE
The ORIGINAL with Tyrolean alpine-hay
WSP0000075 ▲ FVP ● FVS
WSP0000090 ◆ HPL



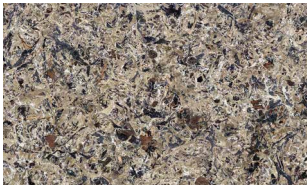
**BAMBOART
MARGERITTA medium**
lichen and 8 marguerites/m²
BMBMAR0055 ○ SKT



SKELETTBLATTLA
200 skeleton leaves per m² for high density
size: 2,950 x 1,360 mm
SKL0000010 ○ SKT



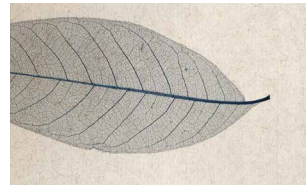
WILDSPITZE HIMMELBLAU
alpine-hay with cornflower petals
WSPHIM0075 ▲ FVP ● FVS
WSPHIM0090 ◆ HPL



BAMBOART
lichen from mountain forest
BMB0000090 ◆ HPL



SKELETTBLATTLA
approx. 200 skeleton leaves per m²
for high density
SKL0000010 ◆ HPL



SKELETTBLATTLA ANTHRAZIT light
approx. 15 delicate skeleton leaves per m²
(coloured) on natural flax backing
SKLANT2002 ▲ FVP



RELAX
relaxing herbal mix e.g. with
lavender, hop and St. John's wort
RLX0000085 ▲ FVP ● FVS



SKELETTBLATTLA ANTHRAZIT light
approx. 15 delicate skeleton leaves per m²
(coloured) on white eco-fleece
SKLANT2002 ● EVW



WOLLÄ
upcycled sheep wool
WOL0000085 ▲ FVP ○ SKT



SKELETTBLATTLA medium
approx. 70 skeleton leaves per m²
for medium density
SKL0000045 ◆ FLX ○ SKT



KORNBLUAMA BLAU
colour intense cornflower blossoms
KOBBLU0085 ▲ FVP ● FVS



HOPFN medium
loosely spread single leaves of hop
on golden paper
HOPBLI0065GTA



DINCKL
upcycled spelt husks
DKL0000080 ◆ HPL



LAWENDL
upcycled and fragrant
lavender petals and stems
LAW0000090 ◆ HPL



ROASNBLIATN
fragrant rose petals
ROABLI0085
▲ FVP ● FVS ◆ HPL

**special characteristics
light & medium
collection**

Due to the density
of the raw material
the backing is part
of the surface design.

- natural flax backing
- white eco-fleece
 - brown flexi
 - golden paper

Ideal for large
area applications

... on various backings



FVS » Self-adhesive flax backing with self-adhesive film

- direct application on (nearly) any surface
- suitable for backlighting

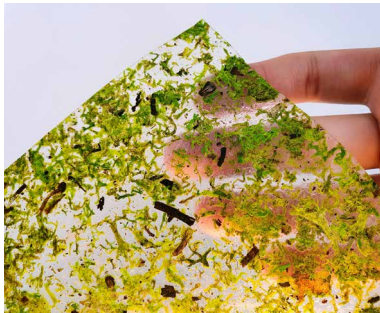
format: rolls
width 1,360 mm
MOQ 1 m²



FVP » Flax backing

100% natural

- breathable
- unbleached
- special lighting effects through backlighting
- processing: like wallpaper (wall-pasting technique) or as laminate (veneer press)



SKT » Translucent Self-adhesive

natural material applied directly on adhesive film

- direct application for double-sided view, e.g. for glass
- suitable for backlighting

EVW » Eco-fleece white

recycled cellulose and textile fibres

- STANDARD 100 by OEKO-TEX®
- processing: like wallpaper (wall-pasting technique) or bonding to various surfaces



FLX » Flexi

thin flexible fleece

- processing: like wood veneer
- no glue penetration
- available on self-adhesive



BKO/BDN » Flooring

sealed with polyurethane

- glue-down panel on cork
- click panel
- panel size: 1,235 x 305 mm
- object class 32
- with additional sealing object class 33
- abrasion resistance: AC3



HPL » high pressure laminate laminate board

- size: 3,050 x 1,320 mm
- processing: like conventional laminate



