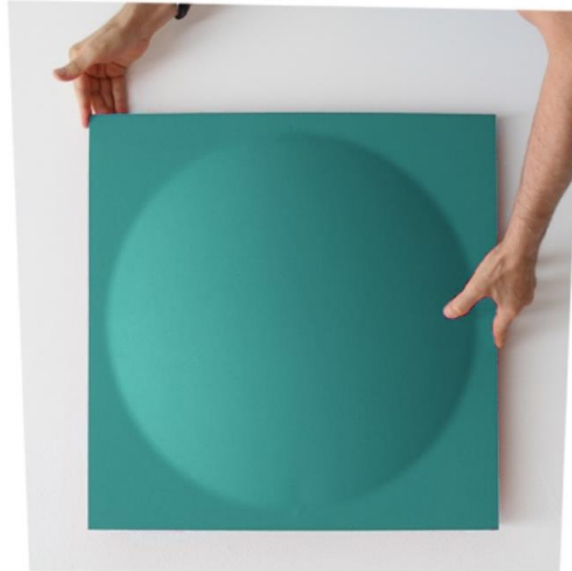


ECOround

Soundabsorbing Ceiling Panel

asset
space becomes place



NAME:

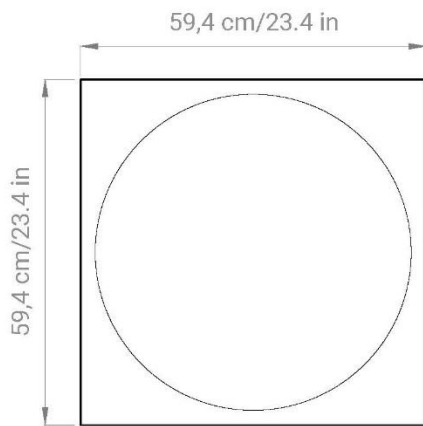
ECOround Full

DESCRIPTION:

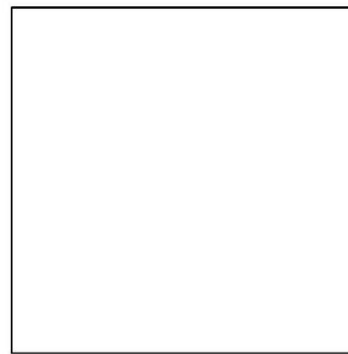
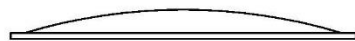
Thermobonded sound-absorbing monomateric panel

APPLICATION:

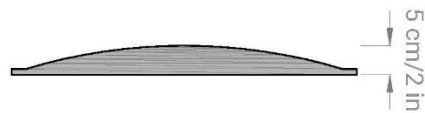
- Wall with velcro
- Ceiling with velcro
- False ceiling: Directly inside the false ceiling structure



side



section



DIMENSIONS:

- L 59,4 x H 59,4 x THK 5 cm
- L 23.4 x H 23.4 x THK 2 in

NOTE: *Panels may have differences in thickness due to the type of material*

WEIGHT:

- 3,2 kg/m²
- 0.65 lb /ft²

COMPOSITION:

- Main core: sound absorbing material made of 100% recycled material, polyester fibers

Reaction to fire: B-s2, d0

Smoke class: F1

Certificate: Oekotex

- Finishing CAT **A**:

- **Trevira CS** - 100% polyester

Reaction to fire: **Class 1**

Certificate: **Oekotex**

- **ECOfelt** - 90% wool, 10% polyester

- **PETfelt** - 100% PET – From post-consumer plastic bottles

- **Velvet** - 100% polyester

- Finishing CAT **B**:

- **Tweed** - 75% wool, 25% polyamide

Reaction to fire: **Class 1**

- **Trace** - 100% Trevira CS FR, FR polyester

Reaction to fire: **Class 1**

Certificate: **Oekotex**

RECYCLABILITY:

Recyclable material panel recyclable at the end of his life, without having to divide soul and finishing

MAINTENANCE:

Cleanable panel with specific detergents

CERTIFICATIONS:

• **FIRE REACTION CLASS:**

B-s2, d0



• **CE MARK:**

B-s1, d0



• **GREEN LABELS:**

GREENGUARD
GREENGUARDGOLD



• **VOC EMISSION TEST**

Indoor Air Comfort GOLD



• **SOUND ABSORPTION REPORT:**

UNI EN ISO 354: 2003

UNI EN ISO 11654: 1998

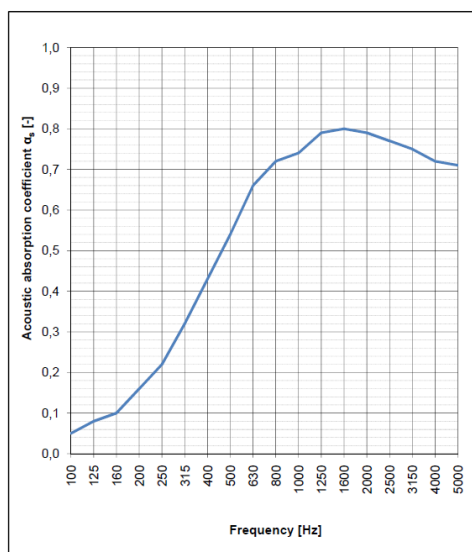


ECOROUND FULL:

Sample description: Thermobounded sound absorbing panel, Model "ECORound Full"
Mounting Type:A

Sample area: 10.63 m²
Reverberation room volume: 161.3 m³

f [Hz]	αs [-]
Frequency	Acoustic absorption coefficient values
100	0.05
125	0.08
160	0.10
200	0.16
250	0.22
315	0.32
400	0.43
500	0.54
630	0.66
800	0.72
1000	0.74
1250	0.79
1600	0.80
2000	0.79
2500	0.77
3150	0.75
4000	0.72
5000	0.71



Evaluation based on laboratory measurement results by means of a technical method.

CAT A



COMPOSITION

100% Trevira CS FR, poliestere Fr
100% Trevira FR CS, polyester Fr



Trevira CS.



Light grey 611T Moka 516 Beige 532 Camel 533 Tuscan brown 534 Brown sugar 569



Yellow 53 Carrot 66 Tiger eye 119 Summer 133 Brick 572 Orange 120



Red 231 Bordeaux 236 Red wine 234 Lavender 175 Fuchsia 173 Purple 262



Lime 462 Green tea 425 Apple Green 463 Office green 443 Grass 464 Olive 426



Forest green 496 Dark mud 571 Pearl grey 643 Light blue 386 Azuleja 367 Capri 379



Turquoise 366 Peacock blue 411 Pastel blue 380 Steel blue 263 Iceberg 377 Queen blue 411



Sapphire 331 Office blue 332T Dark blue 334T Midnight blue 333T Quartz grey 636 Grey 629



Old silver 625 Taupe 607 White 999 Black 651



COMPOSITION

90% lana naturale, 10% poliestere
90% natural wool, 10% polyester



ECOfelt.

Ghost white 955E	Chalk 327	Grey 953E	Concrete 903	Beige 952	Caramel 332E
Mushroom 325	Chocolate 352	Taupe 511	Brown 605	Rust 604	Corten 516
Yellow 34	Egg 980	Mustard 54	Cob orange 997	Orange 971	Coral 336
Red 5	Pompei 47	Bordeaux 192	Marsala 973	Quartz rose 940	Salmon 317
Bubble pink 53	Pink 988	Marylin 323	Mauve 601	Agate 919	Violet 921
Purple 508	Barolo 602	Grape 603	Fresh air 976	Salvia green 334E	Acid green 611E
Cashmere green 89	Grassland 937	Tea Green 345	Leaf Green 910	Lagoon 608	Peacock blue 962
Black forest 77	Dark musk 22E	Mineral Blue 311	Biggest Splash 41	Capri 341	Avio 333E
Light blue 914	Blue yonder 200	Azuleja 318	Moonstone 512	Skyblue 942	Nynph 972
Honolulu blue 607	Blue 193	Blue Klein 322	Deep sea blue 963	Ink 329	Dark grey 923



COMPOSITION

96% PET - Bottiglie di plastica postconsumo.
96% PET - Recycled plastic bottles.



PETfelt.



Ash 703 Fog 953P Milk 955P Beige 16 Tuscan brown 20 Mud 19



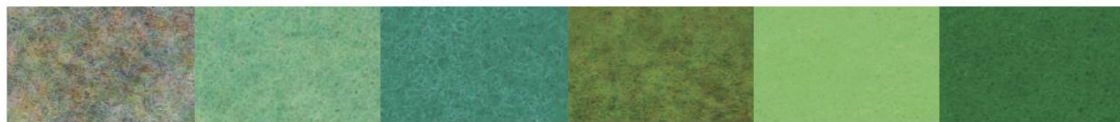
Pale yellow 41 Alabaster 32 Yellow 3 Duck Orange 43 Orange 9 Dark Orange 14



Red 6 Ruby red 27 Bordeaux 15 Pastel pink 37 Pink 17 Wisteria pink 36



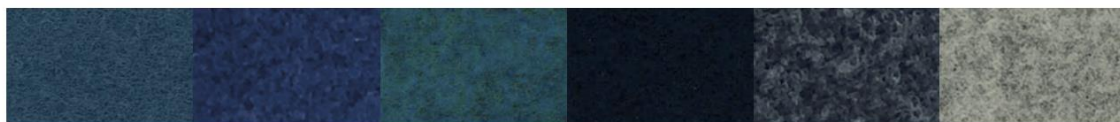
Barbie 113 Fuchsia 10 Sangria 30 Grapes 23 Purple 11 Raspberry 47



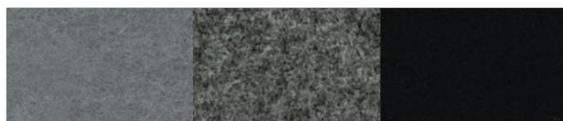
Opal 33 Celadon 39 Water green 2 Kiwy 28 Acid green 7 La salle green 12



Jungle green 31 Grey green 22 Egg blue 38 Light blue 8 Blue 13 Azure 1



Summer night 21 Charm blue 44 Pacific blue 29 Dark blue 5 Midnight 905 Rhino 903



Grey 4 Street 529 Rich black 18

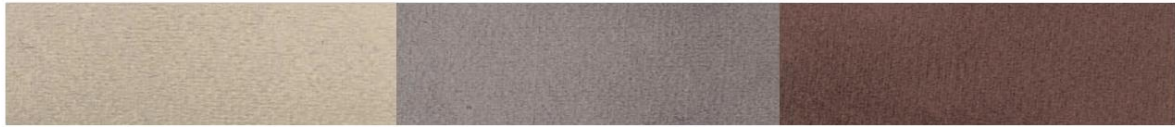


COMPOSITION

100% poliester
100% polyester



Velvet.



Beige 104

Mauve 23V

Marsala 80



Yellow 26

Cherry 10V

Bordeaux 90



Taupe 205

Graphite 617

Brown 100



Bright green 12V

Salvia green 56

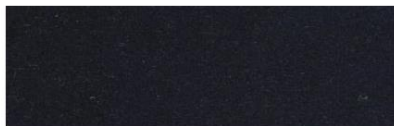
Lagoon 15V



Grey 616

Avio 16V

Deep sea blue 14V



Dark blue 666

CAT B



COMPOSITION

75% lana, 25% poliammide
75% wool, 25% polyamide



Tweed.



Almond 505

Sand 502

Rose 503

Brown 504

Coffee 551

Chestnut 552



Banana 51

Dark gold 52

Mandarin 102

Cadmium 101

Orange 2105

Terra di Siena 103



Pistachio 451

Pond 2457

Foliage 452

Racing green 453

Teal blue 454

Blue 303



Aqua green 455

Air blue 351

River 2460

Grey blue 301

Orchid 251

Purple 252



Ash grey 601

Melting grey 2606

Rock grey 602

Old brown 553

Dark grey 603

Night blue 302



Pink 152

Red 211

Antique ruby 201

Berry 202

Full black 651



COMPOSITION

100% Trevira CS FR, poliestere Fr
100% Trevira FR CS, polyester Fr



Trace.



Warm grey 9607

Cold grey 9610

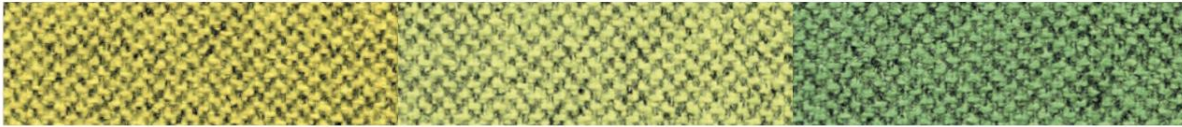
Formal grey 9608



Sea 9402

Blue 9302

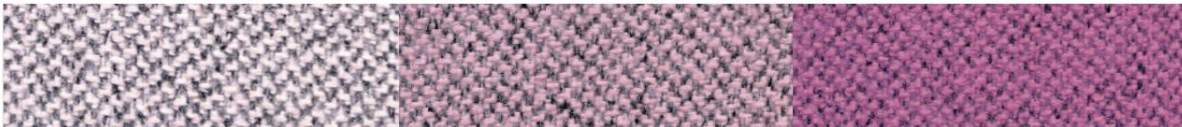
Ocean 9403



Yellow 9052

Pistachio 9452

Green leaf 9455



Cloud pink 9155

Pink 9154

Blossom 9156



Salmon 9157

Strawberry 9203

