

IVC Carpet Tiles
Carpets

asset
space becomes place

BEYOND
FLOORING



COMMERCIAL

Product catalogue
2022

CARPET TILES

“

We offer top-quality products,
impeccable service,
innovative, sustainable production
and a proven track record...

But most of all,
we love helping to
achieve your goals.”



COMMERCIAL

About IVC Commercial

IVC Commercial is a global player in the design and manufacture of flooring solutions including Carpet Tiles, Luxury Vinyl Tiles (LVT) and Heterogeneous Vinyl for use in business, public and private environments.

As the commercial division of IVC Group, we're focused on improving the productivity and wellbeing of users in spaces through innovative solutions that are easy to implement and affordable. Accountable for our actions, we design and make floors responsibly in Europe, developing a circular approach to the future of flooring.

IVC Group is part of Mohawk Industries Inc., the world's largest flooring company. With 1,500 employees and 7 production sites in Europe and Russia, IVC Group produces over 130,000,000m² of flooring every year.



Carpet Tiles

The Collection

Art Intervention

06
CREATIVE SPARK

10
EXPANSION POINT

12
BLURRED EDGE

Art Exposure

14
TRUSTED GUIDE

16
ACADEMIC VIEW

Art Fields

18
ORGANIC SHIFT

20
FULL SHIFT

Art Style

22
SHARED PATH

24
DISRUPTIVE PATH

26
METALLIC PATH

Balanced Hues

28
BALANCED HUES

Contour

30
PERSPECTIVE

32
VIEW

Imperfection

34
GRIT

36
BRUUT

38
RUPTURE

Rudiments

40
BASALT

42
JUTE

44
TEAK

46
CLAY

48
CLAY CREATE

Step Up

50
STEP UP

BEYOND
FLOORING



Multi colour mix

Creative Spark

Art Intervention

- Construction: tufted 1/10" gauge loop
- Backing: EcoFlex™ Statera
- Pile material: 100% solution dyed nylon
- Dimensions - m²/box: 50 x 50 cm - 5 m²
- Pile weight: ± 540 g/m²
- Pile thickness: ± 3,1 mm
- Total thickness: ± 6,3 mm
- Wear classification: 33 / LC1
- Fire classification: Bfl-s1
- Impact sound reduction: ΔLw = 32 dB
- Sound absorption: 0,15 aw
- GUT-Prodís number: 3AA1D4DF



566 LRV: 2,41



646 LRV: 3,62



467 LRV: 6,73



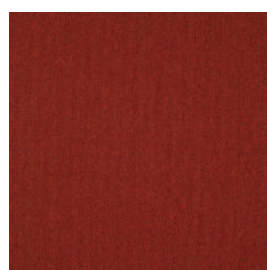
478 LRV: 4,29



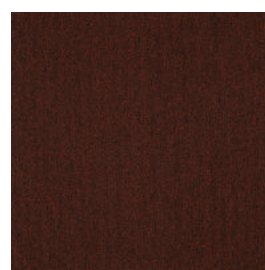
574 LRV: 5,67 - L 38,33



685 LRV: 7,04



310 LRV: 5,82



363 LRV: 3,05



543 LRV: 6,67



621 LRV: 9,97



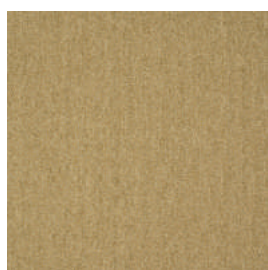
232 LRV: 12,32



362 LRV: 5,90



569 LRV: 6,21



627 LRV: 17,61



140 LRV: 31,36



838 LRV: 4,72

LRV = Light Reflectance Value according to BS 8493, L = according to CIE L*a*b* colour space



646 ○

○
848

○
685

○
911



989 LRV: 4,37



969 LRV: 12,73



419 LRV: 19,09



731 LRV: 25,98



979 LRV: 9,02 - L 38,33



927 LRV: 19,80



854 LRV: 8,29



733 LRV: 18,39



904 LRV: 14,44



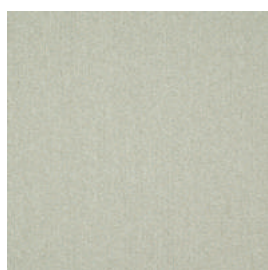
559 LRV: 13,16



848 LRV: 3,95



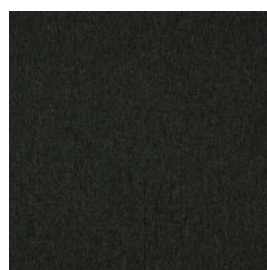
751 LRV: 20,99



911 LRV: 31,04



545 LRV: 23,51



998 LRV: 2,29



745 LRV: 9,95

LRV = Light Reflectance Value according to BS 8493, L = according to CIE L*a*b* colour space

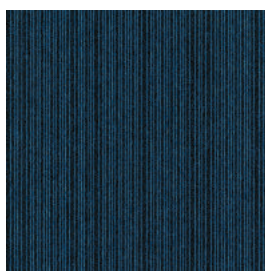


Expansion Point 621 - Creative Spark 646 - 621 - Basalt 685

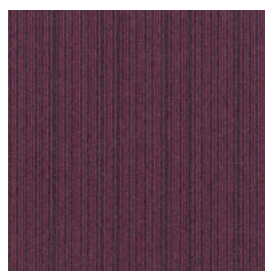
Expansion Point

Art Intervention

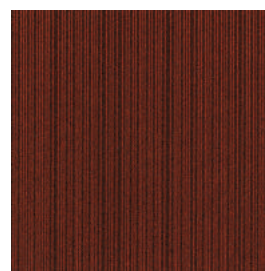
- Construction: tufted 1/10" gauge loop
- Backing: EcoFlex™ Statera
- Pile material: 100% solution dyed nylon
- Dimensions - m²/box: 50 x 50 cm - 5 m²
- Pile weight: ± 540 g/m²
- Pile thickness: ± 3,3 mm
- Total thickness: ± 6,6 mm
- Wear classification: 33 / LC21
- Fire classification: Bfl-s1
- Impact sound reduction: ΔLw = 27 dB
- Sound absorption: 0,15 aw
- GUT-Prodis number: F6619831



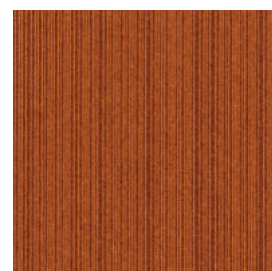
575 LRV: 3,74 - L 23,93



478 LRV: 5,10 - L 26,87



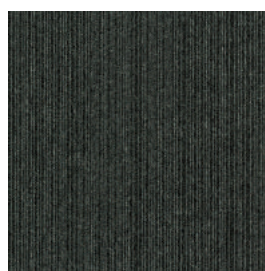
363 LRV: 4,20 - L 24,31



273 LRV: 8,25 - L 33,13



621 LRV: 5,97 - L 29,64



987 LRV: 5,77 - L 29,28



979 LRV: 3,51 - L 22,39



838 LRV: 3,38 - L 21,67



972 LRV: 11,13 - L 29,64



911 LRV: 19,47 - L 50,74



975 LRV: 20,77 - L 53,00



743 LRV: 16,44 - L 46,02

LRV = Light Reflectance Value according to BS 8493, L = according to CIE L*a*b* colour space



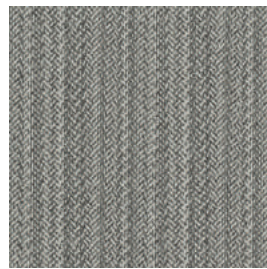
362 ○

Blurred Edge

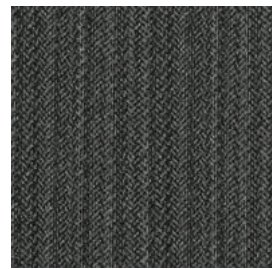
Art Intervention

- Construction: tufted 1/10" gauge loop
- Backing: EcoFlex™ Statera
- Pile material: 100% solution dyed nylon
- Dimensions - m²/box: 50 x 50 cm - 5 m²
- Pile weight: ± 540 g/m²
- Pile thickness: ± 2,5 mm
- Total thickness: ± 6,6 mm
- Wear classification: 33 / LC1
- Fire classification: Bfl-s1
- Impact sound reduction: ΔLw = 25 dB
- Sound absorption: 0,15 aw
- GUT-Produs number: Ongoing

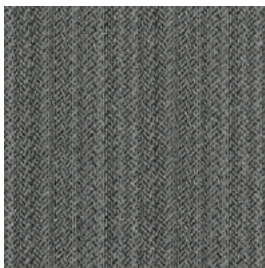
Blurred Edge



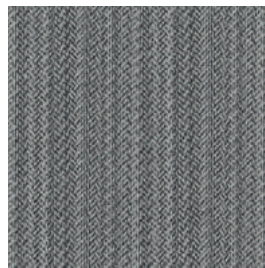
911 LRV: 17,78 - L 47,80



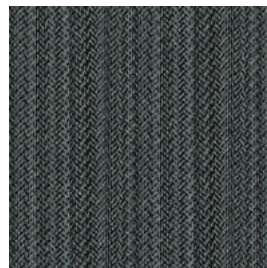
979 LRV: 5,08 - L 26,12



987 LRV: 8,18 - L 36,46



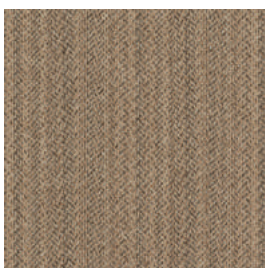
559 LRV: 13,19 - L 43,24



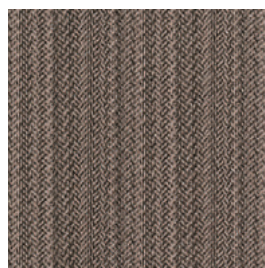
569 LRV: 6,37 - L 29,36



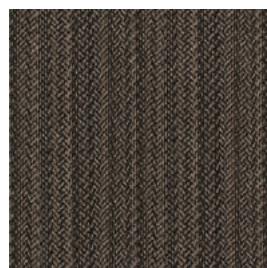
685 LRV: 4,11 - L 24,84



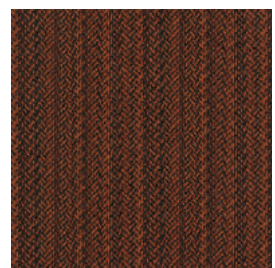
733 LRV: 15,59 - L 46,41



854 LRV: 8,74 - L 36,79



848 LRV: 5,35 - L 28,54



362 LRV: 4,06 - L 22,41

LRV = Light Reflectance Value according to BS 8493, L = according to CIE L*a*b* colour space



Creative Spark
979

Trusted Guide
958

Trusted Guide

Art Exposure

- Construction: tufted 1/12" gauge loop
- Backing: EcoFlex™ Statera
- Pile material: ColorStrand®
100% solution dyed Pa6 (40% recycled content)
- Dimensions - m²/box: 50 x 50 cm - 5 m²
- Pile weight: ± 600 g/m²
- Pile thickness: ± 3,1 mm
- Total thickness: ± 6,5 mm
- Wear classification: 33 / LC1
- Fire classification: Bfl-s1
- Impact sound reduction: ΔLw = 25 dB
- Sound absorption: 0,15 αw
- GUT-Prodís number: 1F0B31AD



958 LRV: 13,06 - L 42,84



853 LRV: 15,95 - L 46,89



***569** LRV: 5,43 - L 27,91



989 LRV: 5,55 - L 28,24



959 LRV: 10,64 - L 38,94



924 LRV: 9,33 - L 36,48

LRV = Light Reflectance Value according to BS 8493, L = according to CIE L*a*b* colour space



924

Academic View

Art Exposure

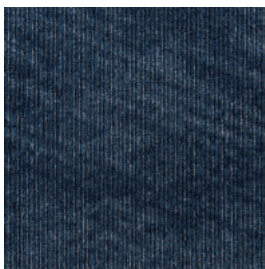
- Construction: tufted 1/12" gauge loop
- Backing: EcoFlex™ Statera
- Pile material: ColorStrand®
100% solution dyed Pa6 (40% recycled content)
- Dimensions - m²/box: 50 x 50 cm - 5 m²
- Pile weight: ± 600 g/m²
- Pile thickness: ± 3,2 mm
- Total thickness: ± 6,6 mm
- Wear classification: 33 / LC2
- Fire classification: Bfl-s1
- Impact sound reduction: ΔLw = 25 dB
- Sound absorption: 0,20 aw
- GUT-Prodís number: 32EF772D



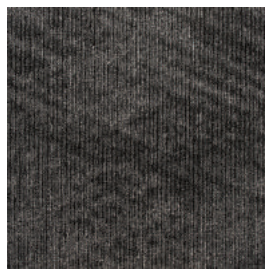
958 LRV: 12,97 - L 42,68



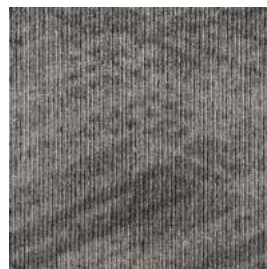
853 LRV: 15,95 - L 46,84



569 LRV: 5,42 - L 27,87



989 LRV: 5,51 - L 28,10



959 LRV: 10,37 - L 38,43



924 LRV: 19,10 - L 50,76

LRV = Light Reflectance Value according to BS 8493, L = according to CIE L*a*b* colour space



Full Shift
166

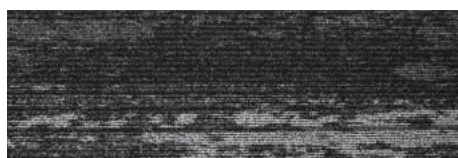
Organic Shift
961

Shared Path 989

Organic Shift

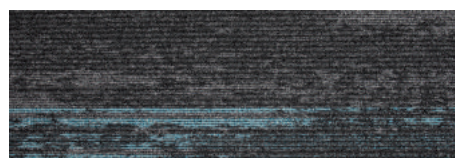
Art Fields

- Construction: tufted 1/12" gauge loop
- Backing: EcoFlex™ Statera
- Pile material: ColorStrand®
100% solution dyed Pa6 (40% recycled content)
- Dimensions - m²/box: 25 x 75 cm - 3,75 m²
- Pile weight: ± 620 g/m²
- Pile thickness: ± 3,2 mm
- Total thickness: ± 6,5 mm
- Wear classification: 33 / LC2
- Fire classification: Bfl-s1
- Impact sound reduction: ΔLw = 28 dB
- Sound absorption: 0,15 αw
- GUT-Prodin number: 1FFB845B



969

LRV: 10,03 - L 37,90



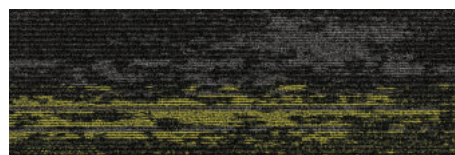
955

LRV: 7,45 - L 32,80



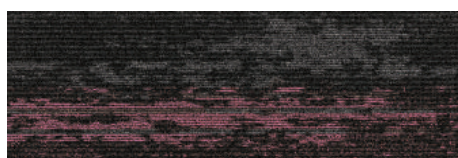
956

LRV: 6,71 - L 31,14



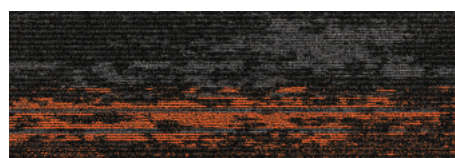
961

LRV: 8,20 - L 34,40



964

LRV: 4,95 - L 26,59



953

LRV: 5,90 - L 29,16

LRV = Light Reflectance Value according to BS 8493, L = according to CIE L*a*b* colour space



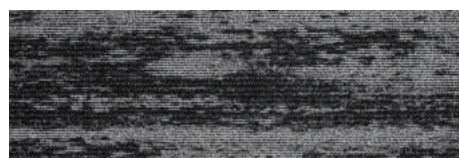
Full Shift
464

Shared Path
924

Full Shift

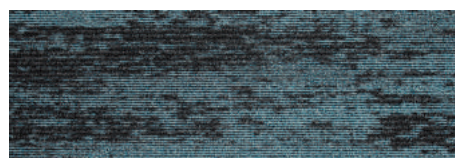
Art Fields

- Construction: tufted 1/12" gauge loop
- Backing: EcoFlex™ Statera
- Pile material: ColorStrand®
100% solution dyed Pa6 (40% recycled content)
- Dimensions - m²/box: 25 x 75 cm - 3,75 m²
- Pile weight: ± 620 g/m²
- Pile thickness: ± 3,2 mm
- Total thickness: ± 6,5 mm
- Wear classification: 33 / LC2
- Fire classification: Bfl-s1
- Impact sound reduction: ΔLw = 27 dB
- Sound absorption: 0,15 αw
- GUT-Prodix number: D5A2E370



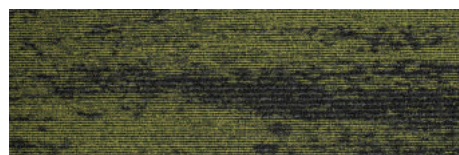
959

LRV: 12,91 - L 42,62



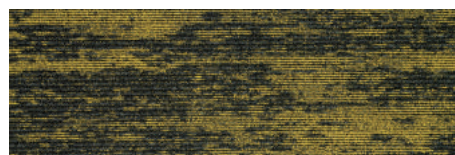
665

LRV: 7,91 - L 33,80



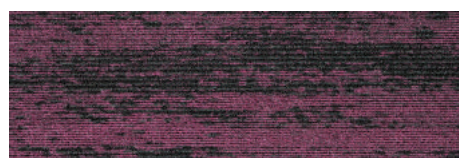
656

LRV: 5,99 - L 29,40



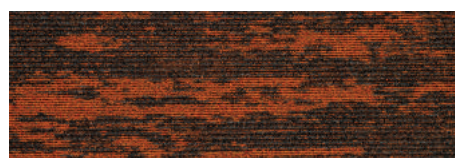
166

LRV: 8,15 - L 34,30



464

LRV: 5,34 - L 27,67



353

LRV: 6,24 - L 30,02

LRV = Light Reflectance Value according to BS 8493, L = according to CIE L*a*b* colour space



Shared Path

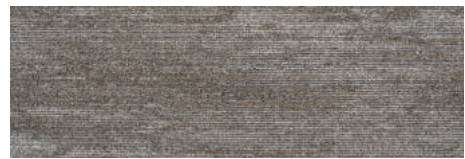
Art Style

- Construction: tufted 1/12" gauge loop
- Backing: EcoFlex™ Statera
- Pile material: ColorStrand®
100% solution dyed Pa6 (40% recycled content)
- Dimensions - m²/box: 25 x 75 cm - 3,75 m²
- Pile weight: ± 600 g/m²
- Pile thickness: ± 3,6 mm
- Total thickness: ± 7,1 mm
- Wear classification: 33 / LC1
- Fire classification: Bfl-s1
- Impact sound reduction: ΔLw = 26 dB
- Sound absorption: 0,15 aw
- GUT-Prodin number: 6A8A980E



853

LRV: 14,89 - L 45,41



958

LRV: 12,34 - L 41,69



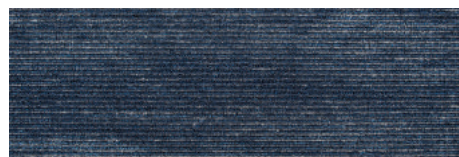
924

LRV: 18,82 - L 50,37



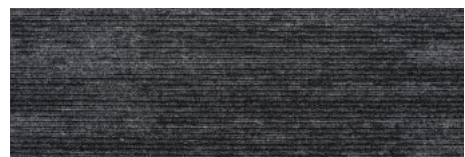
959

LRV: 10,21 - L 38,09



569

LRV: 5,09 - L 26,94



989

LRV: 5,45 - L 27,93

LRV = Light Reflectance Value according to BS 8493, L = according to CIE L*a*b* colour space



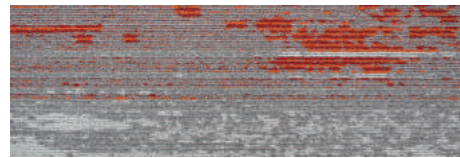
931

Disruptive Path

Art Style

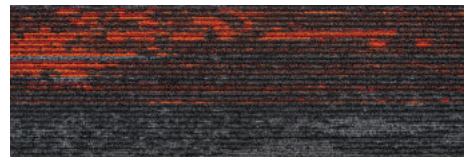
- Construction: tufted 1/12" gauge loop
- Backing: EcoFlex™ Statera
- Pile material: ColorStrand®
100% solution dyed Pa6 (40% recycled content)
- Dimensions - m²/box: 25 x 75 cm - 3,75 m²
- Pile weight: ± 600 g/m²
- Pile thickness: ± 3,5 mm
- Total thickness: ± 7 mm
- Wear classification: 33 / LC1
- Fire classification: Bfl-s1
- Impact sound reduction: ΔLw = 28 dB
- Sound absorption: 0,15 aw
- GUT-Prodix number: 6D12A97A

Disruptive Path



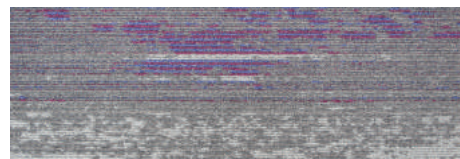
913

LRV: 16,05 - L 46,74



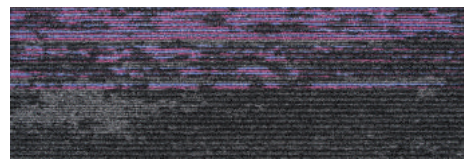
933

LRV: 5,20 - L 27,19



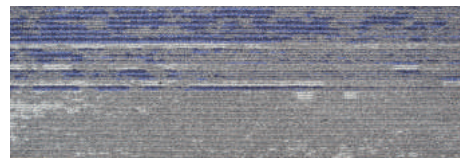
919

LRV: 14,74 - L 45,06



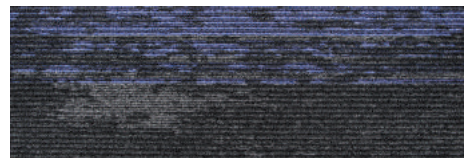
944

LRV: 5,42 - L 27,73



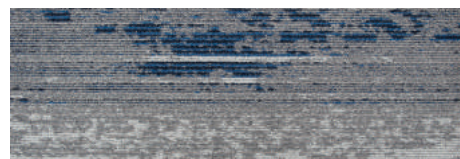
914

LRV: 16,48 - L 47,04



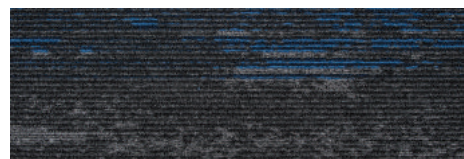
954

LRV: 5,09 - L 26,90



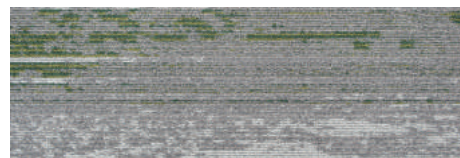
915

LRV: 15,52 - L 45,96



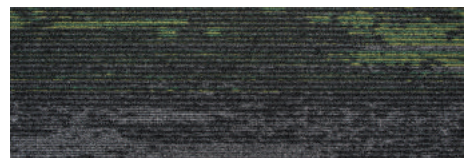
955

LRV: 4,72 - L 25,87



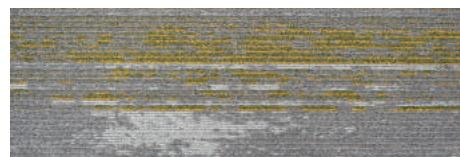
916

LRV: 15,86 - L 46,53



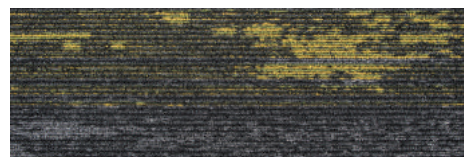
946

LRV: 5,37 - L 27,64



911

LRV: 16,41 - L 47,32



931

LRV: 5,70 - L 28,45

LRV = Light Reflectance Value according to BS 8493, L = according to CIE L*a*b* colour space



Creative Spark
751

559

Metallic Path

Art Style

- Construction: tufted 1/12" gauge loop
- Backing: EcoFlex™ Statera
- Pile material: ColorStrand®
100% solution dyed Pa6 (40% recycled content)
- Dimensions - m²/box: 25 x 75 cm - 3,75 m²
- Pile weight: ± 600 g/m²
- Pile thickness: ± 3,5 mm
- Total thickness: ± 7 mm
- Wear classification: 33 / LC1
- Fire classification: Bfl-s1
- Impact sound reduction: ΔLw = 29 dB
- Sound absorption: 0,15 aw
- GUT-Prodix number: 68365BF5



859

LRV: 15,56 - L 46,23



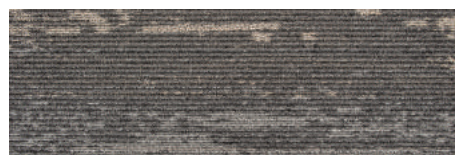
939

LRV: 12,13 - L 41,29



929

LRV: 17,38 - L 48,55



949

LRV: 11,21 - L 39,67



559

LRV: 6,33 - L 29,56



979

LRV: 6,47 - L 30,07

LRV = Light Reflectance Value according to BS 8493, L = according to CIE L*a*b* colour space

675 ○

964 ○

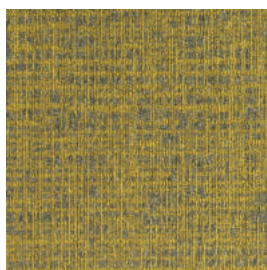


Balanced Hues

- Construction: tufted 1/12" gauge loop
- Backing: EcoFlex™ Statera
- Pile material: ColorStrand®
100% solution dyed Pa6 (40% recycled content)
- Dimensions - m²/box: 50 x 50 cm - 4,5 m²

- Pile weight: ± 720 g/m²
- Pile thickness: ± 3,9 mm
- Total thickness: ± 7 mm
- Wear classification: 33 / LC2

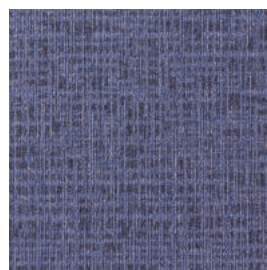
- Fire classification: Bfl-s1
- Impact sound reduction: ΔLw = 28 dB
- Sound absorption: 0,20 αw
- GUT-Prodix number: FA52FF8B



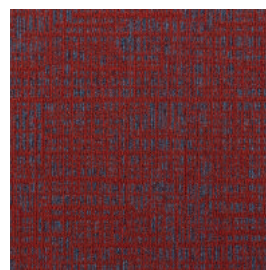
158 LRV: 12,45 - L 41,92



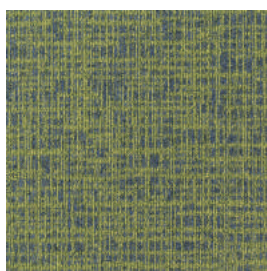
455 LRV: 6,85 - L 31,47



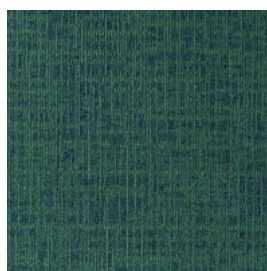
544 LRV: 8,35 - L 34,7



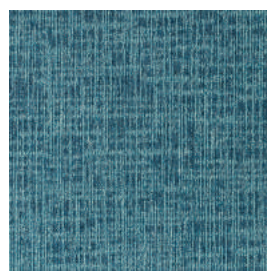
365 LRV: 4,43 - L 25,06



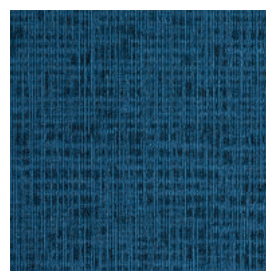
646 LRV: 8,21 - L 34,41



675 LRV: 5,73 - L 28,72



536 LRV: 12,64 - L 42,22



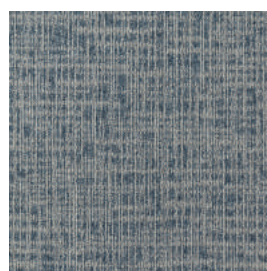
565 LRV: 5,38 - L 27,79



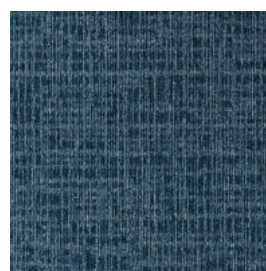
848 LRV: 11,07 - L 39,7



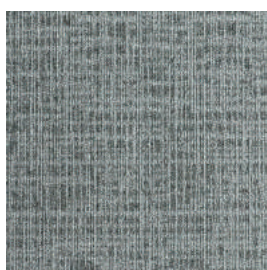
839 LRV: 9,83 - L 37,54



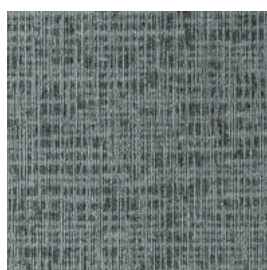
925 LRV: 11,31 - L 39,7



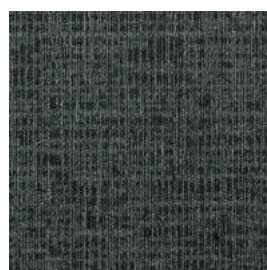
969 LRV: 5,97 - L 29,34



954 LRV: 12,83 - L 42,51



964 LRV: 10,23 - L 38,26



989 LRV: 5,31 - L 27,6



949 LRV: 3,28 - L 21,15

LRV = Light Reflectance Value according to BS 8493, L = according to CIE L*a*b* colour space



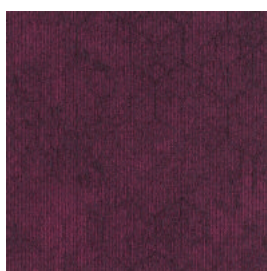
621 ○

975 ○

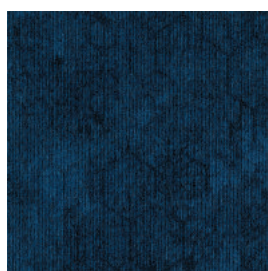
Perspective

Contour

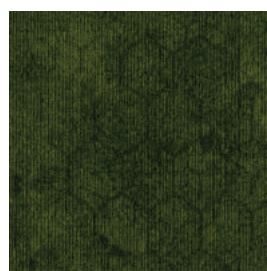
- Construction: tufted 1/12" gauge loop
- Backing: EcoFlex™ Statera
- Pile material: 100% solution dyed nylon
- Dimensions - m²/box: 50 x 50 cm - 5 m²
- Pile weight: ± 600 g/m²
- Pile thickness: ± 3,1 mm
- Total thickness: ± 6,4 mm
- Wear classification: 33 / LC1
- Fire classification: Bfl-s1
- Impact sound reduction: ΔLw = 25 dB
- Sound absorption: 0,15 aw
- GUT-Prodis number: Ongoing



478 LRV: 5,26 - L 27,47



575 LRV: 4,20 - L 24,31



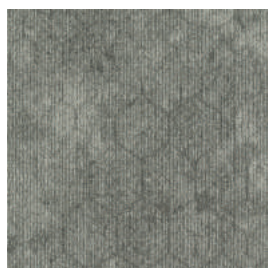
621 LRV: 6,08 - L 29,61



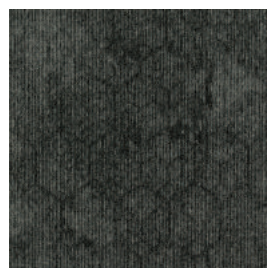
848 LRV: 7,79 - L 33,47



975 LRV: 23,07 - L 55,15



911 LRV: 22,47 - L 54,53



959 LRV: 7,31 - L 32,50



989 LRV: 3,22 - L 20,91

LRV = Light Reflectance Value according to BS 8493, L = according to CIE L*a*b* colour space



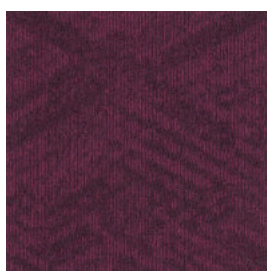
989 ○

959 ○

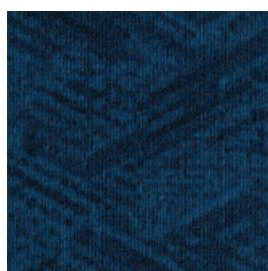
View

Contour

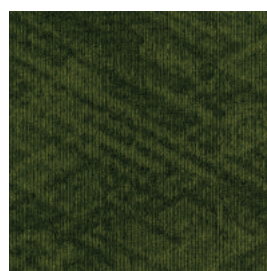
- Construction: tufted 1/12" gauge loop
- Backing: EcoFlex™ Statera
- Pile material: 100% solution dyed nylon
- Dimensions - m²/box: 50 x 50 cm - 5 m²
- Pile weight: ± 600 g/m²
- Pile thickness: ± 3,1 mm
- Total thickness: ± 6,4 mm
- Wear classification: 33 / LC1
- Fire classification: Bfl-s1
- Impact sound reduction: ΔLw = 25 dB
- Sound absorption: 0,15 aw
- GUT-Prodin number: Ongoing



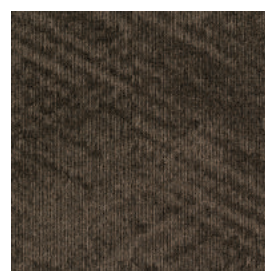
478 LRV: 5,75 - L 28,78



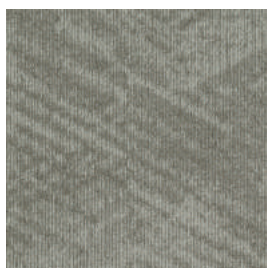
575 LRV: 4,87 - L 26,35



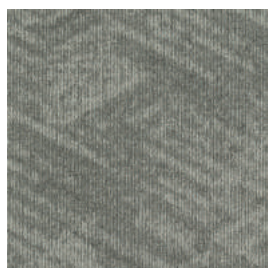
621 LRV: 6,59 - L 30,85



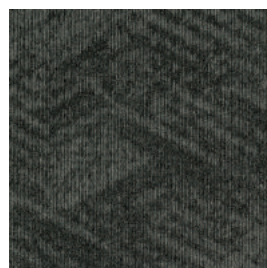
848 LRV: 6,49 - L 30,62



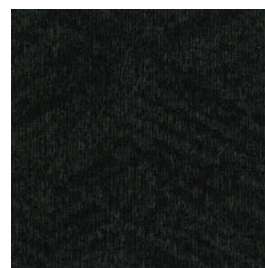
975 LRV: 23,86 - L 55,95



911 LRV: 23,07 - L 55,15



959 LRV: 7,81 - L 33,59



989 LRV: 2,92 - L 19,72

LRV = Light Reflectance Value according to BS 8493, L = according to CIE L*a*b* colour space



745 ○

Grit

Imperfection

- Construction: 1/12" Pattern Perfect®
- Backing: EcoFlex™ Echo (94% recycled felt)
- Pile material: ECONYL® - 100% regenerated nylon
- Dimensions - m²/box: 25 x 100 cm - 4 m²
- Pile weight: ± 750 g/m²
- Pile thickness: ± 3,2 mm
- Total thickness: ± 8,6 mm
- Wear classification: 33 / LC2
- Fire classification: Bfl-s1
- Impact sound reduction: ΔLw = 29 dB
- Sound absorption: 0,25 αw
- GUT-ProdIs number: Ongoing



975 LRV: 21,33 - L 53,31



751 LRV: 30,19 - L 61,82



911 LRV: 20,27 - L 52,14



733 LRV: 15,13 - L 45,81



545 LRV: 21,83 - L 53,85



685 LRV: 11,20 - L 39,91



569 LRV: 10,31 - L 38,40



969 LRV: 9,67 - L 37,24



959 LRV: 7,69 - L 33,37



745 LRV: 11,36 - L 40,17



989 LRV: 5,30 - L 27,59



838 LRV: 3,05 - L 20,23

LRV = Light Reflectance Value according to BS 8493, L = according to CIE L*a*b* colour space



969 ○

989 ○

Bruut

Imperfection

- Construction: 1/12' Pattern Perfect®
- Backing: EcoFlex™ Echo (94% recycled felt)
- Pile material: ECONYL® - 100% regenerated nylon
- Dimensions - m²/box: 25 x 100 cm - 4 m²
- Pile weight: ± 780 g/m²
- Pile thickness: ± 3,3 mm
- Total thickness: ± 8,7 mm
- Wear classification: 33 / LC2
- Fire classification: Bfl-s1
- Impact sound reduction: ΔLw = 31 dB
- Sound absorption: 0,30 αw
- GUT-Prodís number: Ongoing



975

LRV: 25,80 - L 57,85



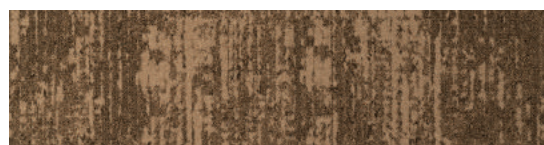
751

LRV: 34,14 - L 65,07



911

LRV: 23,52 - L 55,61



733

LRV: 16,00 - L 46,97



545

LRV: 25,29 - L 57,36



685

LRV: 12,85 - L 42,53



569

LRV: 11,70 - L 40,74



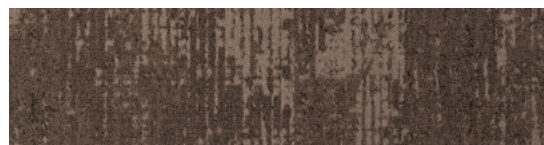
969

LRV: 11,42 - L 40,27



959

LRV: 9,49 - L 36,91



745

LRV: 11,77 - L 40,85



989

LRV: 4,68 - L 25,79



838

LRV: 3,48 - L 21,88

LRV = Light Reflectance Value according to BS 8493, L = according to CIE L*a*b* colour space



Rupture
989

Bruut 989

Grit 989

Rupture

Imperfection

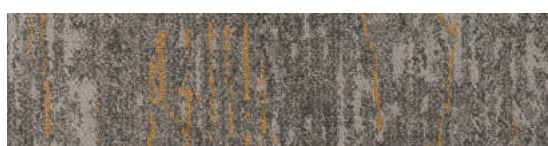
- Construction: 1/12" Pattern Perfect®
- Backing: EcoFlex™ Echo (94% recycled felt)
- Pile material: ECONYL® - 100% regenerated nylon
- Dimensions - m²/box: 25 x 100 cm - 4 m²
- Pile weight: ± 780 g/m²
- Pile thickness: ± 3,3 mm
- Total thickness: ± 8,7 mm
- Wear classification: 33 / LC2
- Fire classification: Bfl-s1
- Impact sound reduction: ΔLw = 30 dB
- Sound absorption: 0,30 αw
- GUT-Prodix number: Ongoing



975 LRV: 23,55 - L 55,63



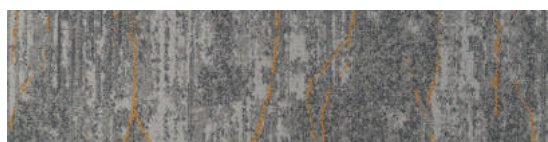
751 LRV: 33,07 - L 64,22



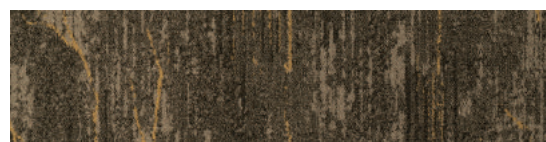
911 LRV: 21,49 - L 53,48



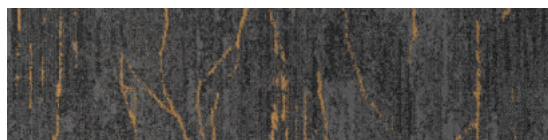
733 LRV: 15,51 - L 46,32



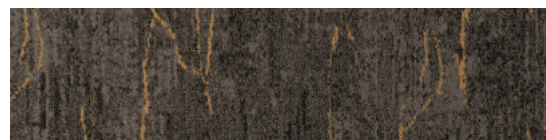
545 LRV: 25,02 - L 57,09



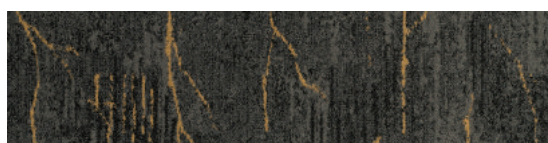
685 LRV: 12,32 - L 41,72



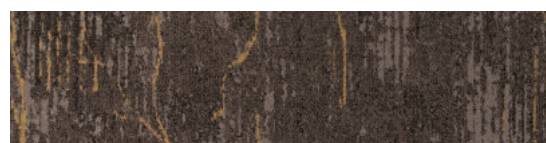
569 LRV: 11,23 - L 39,97



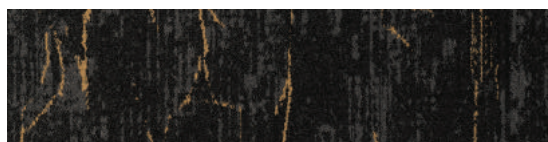
969 LRV: 11,58 - L 40,54



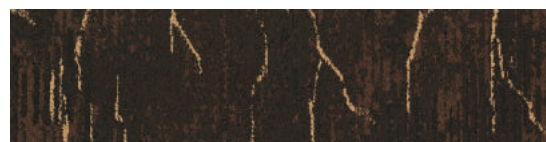
959 LRV: 9,02 - L 36,02



745 LRV: 12,97 - L 42,72



989 LRV: 5,23 - L 27,38



838 LRV: 5,64 - L 28,49

LRV = Light Reflectance Value according to BS 8493, L = according to CIE L*a*b* colour space



569 ○

545 ○

Basalt

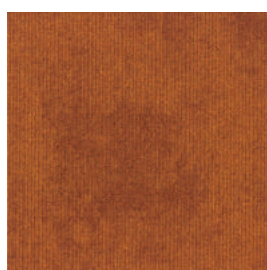
Rudiments

- Construction: tufted 1/12" gauge loop
- Backing: EcoFlex™ Statera
- Pile material: 100% solution dyed nylon
- Dimensions - m²/box: 50 x 50 cm - 5 m²
- Pile weight: ± 600 g/m²
- Pile thickness: ± 3,1 mm
- Total thickness: ± 6,4 mm
- Wear classification: 33 / LC1
- Fire classification: Bfl-s1
- Impact sound reduction: ΔLw = 28 dB
- Sound absorption: 0,15 αw
- GUT-Prodís number: 65EB708B



363

LRV: 4,25



273

LRV: 9,24



159

LRV: 27,58



685

LRV: 5,45



989

LRV: 3,36



848

LRV: 5,84



789

LRV: 16,58



975

LRV: 21,79



959

LRV: 6,99



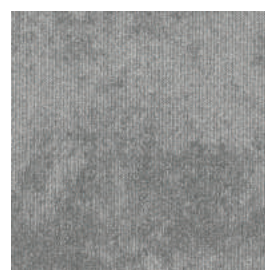
569

LRV: 7,31



545

LRV: 16,41



911

LRV: 18,20

LRV = Light Reflectance Value according to BS 8493



959 ○
 989 ○
 159 ○

Jute

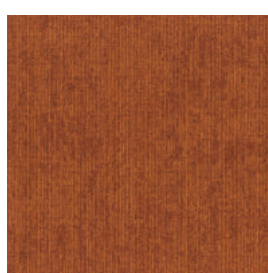
Rudiments

- Construction: tufted 1/12" gauge loop
- Backing: EcoFlex™ Statera
- Pile material: 100% solution dyed nylon
- Dimensions - m²/box: 50 x 50 cm - 5 m²
- Pile weight: ± 600 g/m²
- Pile thickness: ± 3,2 mm
- Total thickness: ± 6,4 mm
- Wear classification: 33 / LC2
- Fire classification: Bfl-s1
- Impact sound reduction: ΔLw = 28 dB
- Sound absorption: 0,15 αw
- GUT-Prodís number: 94EFCC68



363

LRV: 4,25



273

LRV: 9,24



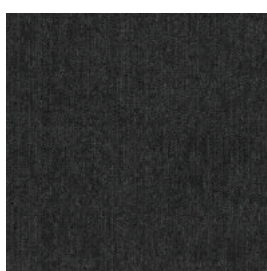
159

LRV: 27,58



685

LRV: 5,45



989

LRV: 3,36



848

LRV: 5,84



789

LRV: 16,58



975

LRV: 21,79



959

LRV: 6,99



569

LRV: 7,31



545

LRV: 16,41



911

LRV: 18,20

LRV = Light Reflectance Value according to BS 8493, L = according to CIE L*a*b* colour space



959 ○

911 ○

989 ○

Teak

Rudiments

- Construction: tufted 1/12" gauge loop
- Backing: EcoFlex™ Statera
- Pile material: 100% solution dyed nylon
- Dimensions - m²/box: 50 x 50 cm - 5 m²

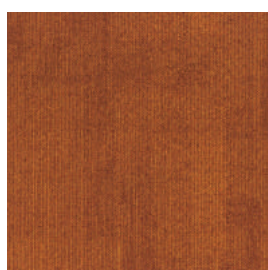
- Pile weight: ± 600 g/m²
- Pile thickness: ± 2,9 mm
- Total thickness: ± 6,4 mm
- Wear classification: 33 / LC1

- Fire classification: Bfl-s1
- Impact sound reduction: ΔLw = 28 dB
- Sound absorption: 0,15 αw
- GUT-Prodís number: AB56D646



363

LRV: 4,25



273

LRV: 9,24



159

LRV: 27,58



685

LRV: 5,45



989

LRV: 3,36



848

LRV: 5,84



789

LRV: 16,58



975

LRV: 21,79



959

LRV: 6,99



569

LRV: 7,31



545

LRV: 16,41



911

LRV: 18,20

LRV = Light Reflectance Value according to BS 8493, L = according to CIE L*a*b* colour space



Clay 911 - 975

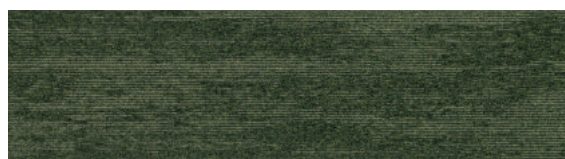
Clay

Rudiments

- Construction: tufted 1/12" gauge loop
- Backing: EcoFlex™ Statera
- Pile material: 100% solution dyed nylon
- Dimensions - m²/box: 25 x 100 cm - 5 m²
- Pile weight: ± 600 g/m²
- Pile thickness: ± 3,4 mm
- Total thickness: ± 7,1 mm
- Wear classification: 33 / LC1
- Fire classification: Bfl-s1
- Impact sound reduction: ΔLw = 28 dB
- Sound absorption: 0,15 αw
- GUT-Prodís number: ongoing



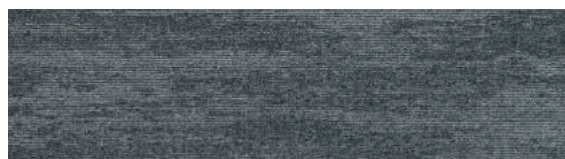
975 LRV: 23,93 - L 54,94



685 LRV: 5,19 - L 26,48



789 LRV: 15,48 - L 49,29



569 LRV: 8,75 - L 39,11



848 LRV: 6,41 - L 28,26



545 LRV: 16,32 - L 49,28



988 LRV: 2,70 - L 20,68



911 LRV: 22,14 - L 49,80



363 LRV: 3,76 - L 21,08



959 LRV: 8,92 - L 29,14



273 LRV: 8,08 - L 34,74



989 LRV: 3,40 - L 23,02

LRV = Light Reflectance Value according to BS 8493, L = according to CIE L*a*b* colour space



Clay Create 955 - 977 - 979

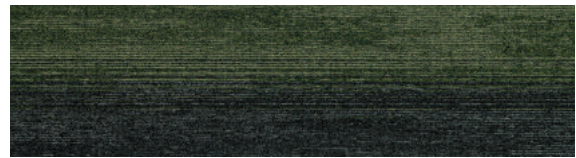
Clay Create

Rudiments

- Construction: tufted 1/12" gauge loop
- Backing: EcoFlex™ Statera
- Pile material: 100% solution dyed nylon
- Dimensions - m²/box: 25 x 100 cm - 5 m²
- Pile weight: ± 600 g/m²
- Pile thickness: ± 3,4 mm
- Total thickness: ± 7,1 mm
- Wear classification: 33 / LC1
- Fire classification: Bfl-s1
- Impact sound reduction: ΔLw = 28 dB
- Sound absorption: 0,15 αw
- GUT-Produs number: ongoing



977 LRV: 23,40 - L 54,85



699 LRV: 3,14 - L 22,84



872 LRV: 12,76 - L 39,73



599 LRV: 3,03 - L 27,35



887 LRV: 2,97 - L 20,00



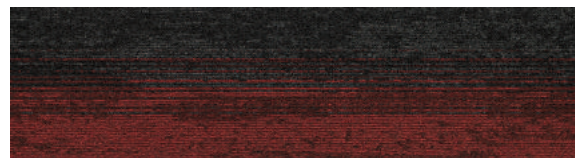
556 LRV: 11,63 - L 39,77



987 LRV: 5,01 - L 21,47



594 LRV: 16,70 - L 52,41



339 LRV: 3,48 - L 23,56



955 LRV: 10,18 - L 36,61



325 LRV: 7,46 - L 35,11



979 LRV: 4,79 - L 29,01

LRV = Light Reflectance Value according to BS 8493, L = according to CIE L*a*b* colour space



955

Step Up

- Construction: 5/32" Tip Sheared
- Backing: EcoFlex™ NXT
- Pile material: 100% Duracolor® Premium Nylon (30% recycled content)
- Dimensions - m²/box: 60,96 cm x 60,96 cm - 5,2 m²
- Pile weight: ± 1288 g/m²
- Pile thickness: ± 5,2 mm
- Total thickness: ± 9 mm
- Wear classification: 33 / LC3
- Fire classification: Bfl-s1
- Impact sound reduction: ΔLw = 29dB
- Sound absorption: In progress
- GUT-Prodís number: In progress



955 LRV: 5,16



989 LRV: 2,51



859 LRV: 4,52



983 LRV: 3,20

LRV = Light Reflectance Value according to BS 8493

Innovative secondary backing

EcoFlex™ Echo

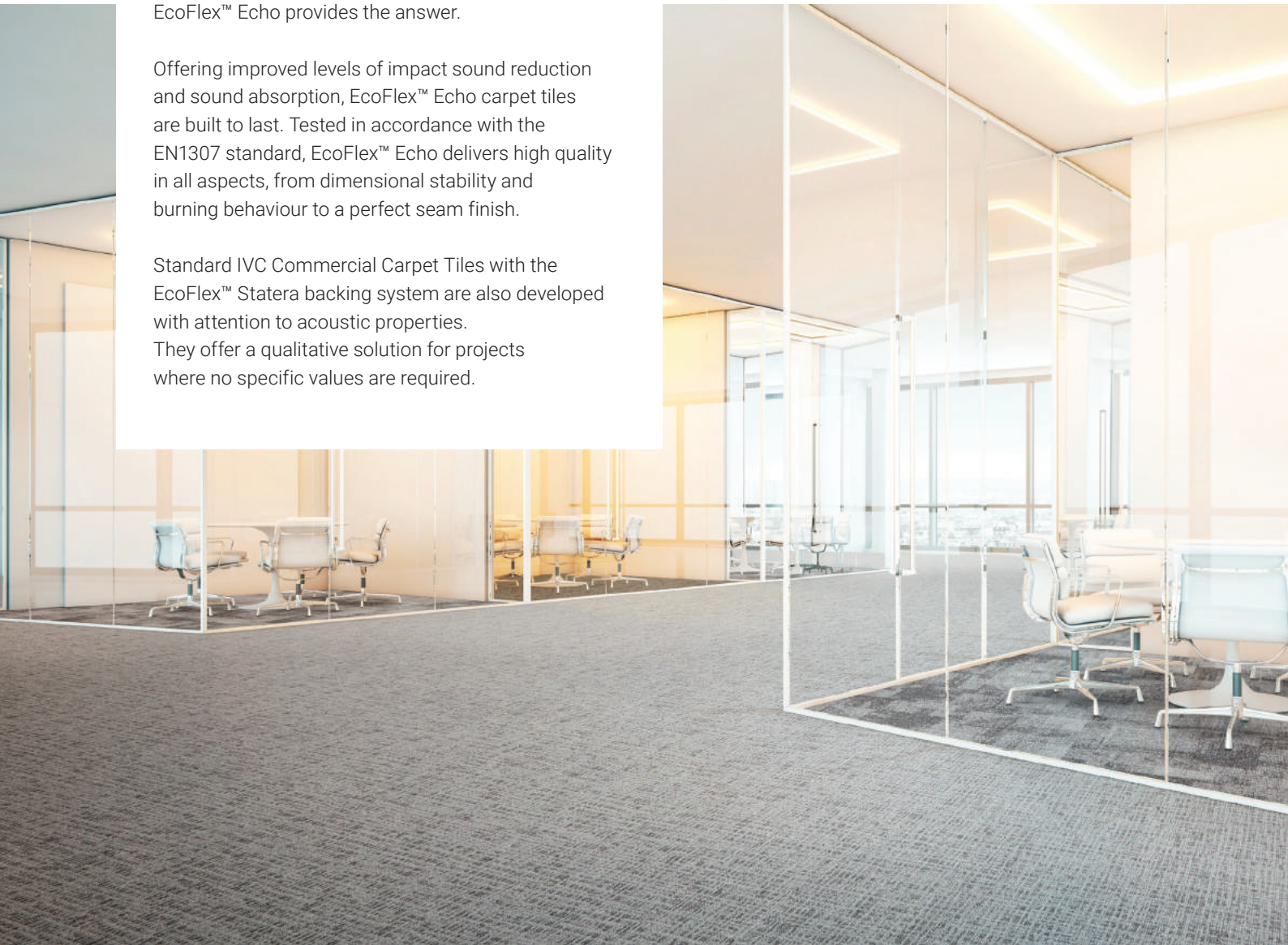
Backing every flooring project

At IVC Commercial we believe everyone is entitled to better acoustics and ergonomic comfort. That's why we've developed a superior backing that considers acoustic insulation, sound absorption and underfoot comfort.

So, when there's need for specific technical requirements regarding the acoustics of a space, EcoFlex™ Echo provides the answer.

Offering improved levels of impact sound reduction and sound absorption, EcoFlex™ Echo carpet tiles are built to last. Tested in accordance with the EN1307 standard, EcoFlex™ Echo delivers high quality in all aspects, from dimensional stability and burning behaviour to a perfect seam finish.

Standard IVC Commercial Carpet Tiles with the EcoFlex™ Statera backing system are also developed with attention to acoustic properties. They offer a qualitative solution for projects where no specific values are required.



Going beyond acoustics

Composed for improved comfort

Dedicated to the future of flooring and the lasting comfort of our customers, we are continuously committed to ensuring the long-term quality of our products.

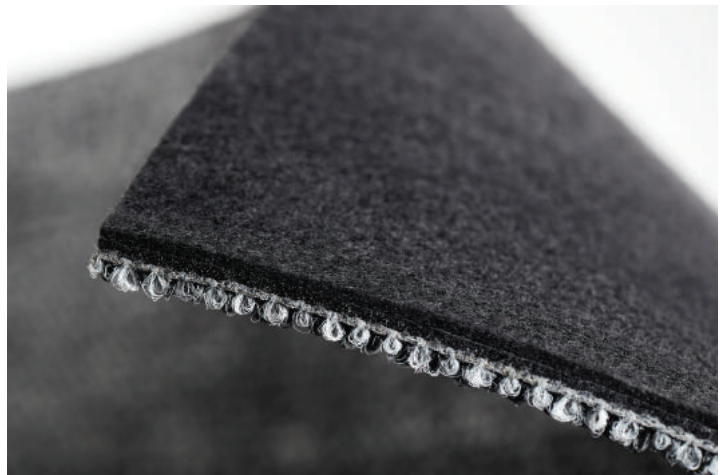
This smart choice of material also ensures a higher level of underfoot comfort and prevents muscle fatigue.

Eco-friendly flooring

Making products more sustainable is an integral part of our innovation and design process.

EcoFlex™ Echo's improved acoustic performance is obtained through an additional layer of 94% recycled polyester felt.

Improved performance and underfoot comfort is obtained through a **94% recycled polyester felt** layer



Standard acoustic offer

EcoFlex Echo is available on a selection of products in a variety of colours from stock. The backing can be specified on other carpet tiles subject to a minimum order quantity



Heterogeneous Vinyl

Easy, durable, versatile

Our sheet vinyl collections are the solution for a stunning floor that's easy to install and maintain. Use them for all your projects; retail, offices, day care centres, social housing, and even schools. Wet jackets, muddy shoes and noisy students are no problem; our heterogeneous vinyl is at the top of its class when it comes to durability, hygiene and acoustic performance.



Luxury Vinyl Tiles

Each plank has its own personality

Our LVT collections reflect the unique patterns and textures found in nature, while offering you the easy installation and maintenance of vinyl floors. The abundance of designs to choose from – oak, teak, concrete and granite are only a few of them – give you the freedom to create truly unique spaces. We've even adapted the shape of our planks to match your project's needs. From triangular to octagonal boards: we'll make them for you.

Easy installation

Flawless combinations

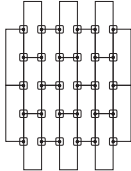
Finding the right floor for your project is one thing, but installing it can be a cumbersome process. Not to worry: IVC hands you the tools to ease this step.

FlexLok

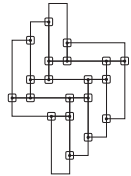
The innovative FlexLok system is the ideal alternative to traditional adhesive installation methods. The odorless dry technique virtually eliminates harmful VOCs and can be used on all underlays, for all IVC carpet tiles. Rely on FlexLok for a fast, easy installation of flexible, floating floors, without any glue. Moreover, the FlexLok system is Declare, HPD & DRI Green label certified.



Installing planks

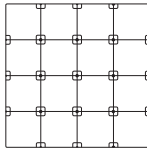


Lay the first row of planks and put FlexLok pads at each joint, adhesive side up. Install the remaining carpet tiles, placing FlexLok tabs as illustrated in the image.

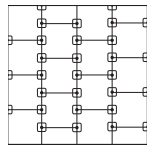


For herringbone designs, put FlexLok pads on each corner, adhesive side up.

Installing tiles

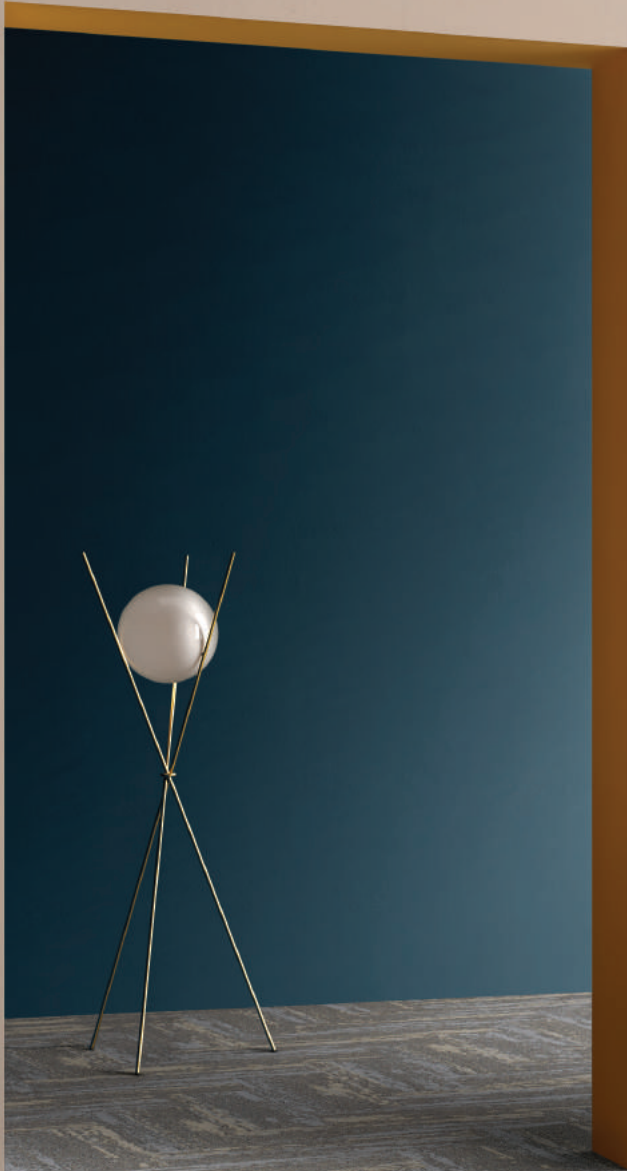


Quarter turn, monolithic, and multi-directional
Put FlexLok pads at each corner of the tiles, adhesive side up.



Brick and Ashlar
Lay the first row of planks and put FlexLok pads at each joint, adhesive side up. Install the remaining carpet tiles, placing FlexLok tabs as illustrated in the image.

> RECEPTION







“

Our broad portfolio of 100% in-house designed Carpet Tiles, Luxury Vinyl Tiles and Heterogeneous Vinyl undoubtedly holds the key for your project.

What's more, you can combine our Luxury Vinyl Tiles, Heterogeneous Vinyl and Carpet Tiles to create a layout that works for your space.”

Future-proof, for you and for the planet

At IVC Group, we truly believe in products that are developed with the future in mind. That's why we take the time to pause and reflect on the impacts of our entire strategy and operation. But we also realise that actions speak louder than words, so here's how we raise the industry standard for sustainability, day after day.

“

Through our certified processes, skilled and inspired people and product portfolio that combines good value and corporate social responsibility, we really make the difference, for you and for the planet.”

- Through resource conservation and waste reduction, we minimise the environmental impact of our manufacturing and distribution operations.
- Our energy-efficient flooring plants are among the leanest and greenest in their class.
- To get our products to you, inland waterways are the logical choice.
- We invest in clean-air technology and cutting-edge manufacturing methods.
- We use as many recycled or renewable materials as possible – think of eco-friendly inks and recycled PVC.
- We hold all suppliers accountable for ensuring that products are made in a responsible manner – one that respects both labour and environment.



Get in touch

Want to learn more about IVC Commercial's flooring solutions, or need help tackling an exciting project? We've got you covered.

Go to [ivc-commercial.com](https://www.ivc-commercial.com) to browse our collections, order samples, download inspirational brochures or stop by one of our showrooms.

You can also make an appointment with our dedicated team by sending us an email via info@ivc-commercial.com. Get in touch!

Follow us on     





Technical Specifications

Spécifications techniques - Technische specificaties - Technische Spezifikationen



		Creative Spark
Construction Structure - Structuur - Konstruktion		Tufted 1/10" gauge loop
Pile fibre composition Composition des fibres - Poolmateriaal - Material der Polnutschicht		100% solution dyed nylon
Secondary backing Envers - Rug - Beschichtung		EcoFlex™ Statera (modified bitumen, 70% recycled content)
Total weight Poids total - Totaal gewicht - Gesamtgewicht		± 4100 g/m ²
Pile weight Poids du velours - Poolgewicht - Poleinsatzgewicht		± 540 g/m ²
Surface pile weight Poids du velours utile - Effectieve poolmassa - Polnutschichtgewicht		± 370 g/m ²
Total thickness Epaisseur totale - Totale dikte - Gesamtdicke		± 6,3 mm
Surface pile thickness Hauteur du velours - Poolhoogte - Poldicke		± 3,1 mm
Surface pile density Densité du velours - Pooldichtheid - Polrohdichte		± 0,119 g/cm ³
Number of tufts Nombre de boucles - Aantal noppen - Noppenzahl		176.300/ m ²
Wear classification Classement d'usage - Gebruiksklasse - Beanspruchungsklasse	EN 1307	33 / LC1
Castor chair suitability Résistance aux chaises à roulettes - Rolstoelgeschiktheid - Stuhlrolleneignung	EN 985	A: intensive use
Fire classification Comportement au feu - Brandgedrag - Brandklasse	EN 13501-1	Bfl-s1
Dimensional stability Stabilité dimensionnelle - Dimensionele stabiliteit - Dimensionsstabilität	EN 986	≤ 0,2%
Colour fastness to light Solidité des couleurs à la lumière - Lichtbestendigheid van de kleuren - Lichtechtheit	EN ISO 105-B02	≥ 7
Rubbing fastness Solidité au frottement - Wrijftechtheid - Reibechtheit	EN ISO 105-X12	≥ 4
Colour fastness to water Solidité à l'eau - Waterechtheid - Wasserechtheit	EN ISO 105-E01	≥ 4
Thermal resistance Résistance thermique - Warmteoorlaatweerstand - Wärmedurchlasswiderstand	ISO 8302	0,072 m ² .K/W
Sound absorption Absorption phonique - Geluidsabsorptie - Schallabsorptionsgrad	EN ISO 354	0,15 aw Hz 125 250 500 1000 2000 4000 as -0,01 0,00 0,06 0,17 0,25 0,34
Impact sound reduction Réduction phonique aux bruits d'impacts - Reductie contactgeluid - Trittschallverbesserungsmaß	EN ISO 10140-3	ΔLw = 32 dB
Permanent antistatic Antistatique permanent - Permanent antistatisch - Permanent antistatisch	ISO 6356	≤ 2 kV
Number of colours Nombre de coloris - Aantal kleuren - Anzahl der Farben		32
Size & Packaging Dimensions & Emballage - Formaats en verpakking - Abmessungen & Verpackung		50 x 50 cm 5 m ² /box - 24 boxes/pallet
GUT-Prodix Number Numéro GUT Prodis - Nummer GUT Prodis - GUT-Prodix Nummer		3AA1D4DF
Warranty years Garantie ans - Garantie in jaren - Garantie Jahren		15



Expansion Point	Blurred Edge	Trusted Guide	Academic View
Tufted 1/10" gauge loop	Tufted 1/10" gauge loop	Tufted 1/12" gauge loop	Tufted 1/12" gauge loop
100% solution dyed nylon	100% solution dyed nylon	100% Colorstrand® Premium Nylon (40% recycled content) 100% solution dyed Pa6	100% Colorstrand® Premium Nylon (40% recycled content) 100% solution dyed Pa6
EcoFlex™ Statera (modified bitumen, 70% recycled content)	EcoFlex™ Statera (modified bitumen, 70% recycled content)	EcoFlex™ Statera (modified bitumen, 70% recycled content)	EcoFlex™ Statera (modified bitumen, 70% recycled content)
± 4300 g/m ²	± 5000 g/m ²	± 4500 g/m ²	± 4500 g/m ²
± 540 g/m ²	± 540 g/m ²	± 600 g/m ²	± 600 g/m ²
± 401 g/m ²	± 310 g/m ²	± 392 g/m ²	± 410 g/m ²
± 6,6 mm	± 6,6 mm	± 6,5 mm	± 6,6 mm
± 3,3 mm	± 2,5 mm	± 3,1 mm	± 3,2 mm
± 0,123 g/cm ³	± 0,124 g/cm ³	± 0,126 g/cm ³	± 0,132 g/cm ³
172.200/ m ²	168.100/m ²	224.400/m ²	234.600/m ²
33 / LC2	33 / LC1	33 / LC1	33 / LC2
A: intensive use	A: intensive use	A: intensive use	A: intensive use
Bfl-s1	Bfl-s1	Bfl-s1	Bfl-s1
≤ 0,2%	≤ 0,2%	≤ 0,2%	≤ 0,2%
≥ 7	≥ 7	≥ 7	≥ 7
≥ 4	≥ 4	≥ 4	≥ 4
≥ 4	≥ 4	≥ 4	≥ 4
0,0687 m ² .K/W	0,0643 m ² .K/w	0,070 m ² .K/W	0,070 m ² .K/W
0,15 aw	0,15 aw	0,15 aw	0,20 aw
Hz 125 250 500 1000 2000 4000 as -0,03 0,07 0,06 0,18 0,37 0,44	Hz 125 250 500 1000 2000 4000 aw 0,02 0,03 0,06 0,19 0,31 0,37	Hz 125 250 500 1000 2000 4000 as 0,05 0,03 0,03 0,16 0,26 0,34	Hz 125 250 500 1000 2000 4000 as 0,02 0,03 0,03 0,16 0,26 0,34
ΔLw = 27 dB	ΔLw = 25 dB	ΔLw = 25 dB	ΔLw = 25 dB
≤ 2 kV	≤ 2 kV	≤ 2 kV	≤ 2 kV
12	10	6	6
50 x 50 cm 5 m ² /box - 24 boxes/pallet	50 x 50 cm 5 m ² /box - 24 boxes/pallet	50 x 50 cm 5 m ² /box - 24 boxes/pallet	50 x 50 cm 5 m ² /box - 24 boxes/pallet
F6619831	Ongoing	1F0B31AD	32EF772D
15	15	15	15

Technical Specifications

Spécifications techniques - Technische specificaties - Technische Spezifikationen

		Organic Shift
Construction Structure - Structuur - Konstruktion		Tufted 1/12" gauge loop
Pile fibre composition Composition des fibres - Poolmateriaal - Material der Polnutschicht		100% Colorstrand® Premium Nylon (40% recycled content) 100% solution dyed Pa6
Secondary backing Envers - Rug - Beschichtung		EcoFlex™ Statera (modified bitumen, 70% recycled content)
Total weight Poids total - Totaal gewicht - Gesamtgewicht		± 4400 g/m ²
Pile weight Poids du velours - Poolgewicht - Poleinsatzgewicht		± 620 g/m ²
Surface pile weight Poids du velours utile - Effectieve poolmassa - Polnutschichtgewicht		± 422 g/m ²
Total thickness Epaisseur totale - Totale dikte - Gesamtdicke		± 6,5 mm
Surface pile thickness Hauteur du velours - Poolhoogte - Poldicke		± 3,2 mm
Surface pile density Densité du velours - Pooldichtheid - Polrohdichte		± 0,128 g/cm ³
Number of tufts Nombre de boucles - Aantal noppen - Noppenzahl		205.000/m ²
Wear classification Classement d'usage - Gebruiksklasse - Beanspruchungsklasse	EN 1307	33 / LC2
Castor chair suitability Résistance aux chaises à roulettes - Rolstoelgeschiktheid - Stuhlrolleneignung	EN 985	A: intensive use
Fire classification Comportement au feu - Brandgedrag - Brandklasse	EN 13501-1	Bfl-s1
Dimensional stability Stabilité dimensionnelle - Dimensionele stabiliteit - Dimensionsstabilität	EN 986	≤ 0,2%
Colour fastness to light Solidité des couleurs à la lumière - Lichtbestendigheid van de kleuren - Lichtechtheit	EN ISO 105-B02	≥ 7
Rubbing fastness Solidité au frottement - Wrijftechtheid - Reibechtheit	EN ISO 105-X12	≥ 4
Colour fastness to water Solidité à l'eau - Waterechtheid - Wasserechtheit	EN ISO 105-E01	≥ 4
Thermal resistance Résistance thermique - Warmtedoorlaatweerstand - Wärmedurchlasswiderstand	ISO 8302	0,072 m ² .K/W
Sound absorption Absorption phonique - Geluidsabsorptie - Schallabsorptionsgrad	EN ISO 354	0,15 aw Hz 125 250 500 1000 2000 4000 aw 0 0 0,1 0,15 0,3 0,35
Impact sound reduction Réduction phonique aux bruits d'impacts - Reductie contactgeluid - Trittschallverbesserungsmaß	EN ISO 10140-3	ΔLw = 28 dB
Permanent antistatic Antistatique permanent - Permanent antistatisch - Permanent antistatisch	ISO 6356	≤ 2 kV
Number of colours Nombre de coloris - Aantal kleuren - Anzahl der Farben		6
Size & Packaging Dimensions & Emballage - Formaats en verpakking - Abmessungen & Verpackung		25 x 75 cm 3,75 m ² /box - 24 boxes/pallet
GUT-Prodix Number Numéro GUT Prodix - Nummer GUT Prodix - GUT-Prodix Nummer		1FFB845B
Warranty years Garantie ans - Garantie in jaren - Garantie Jahren		15



Full Shift	Shared Path	Disruptive Path	Metallic Path
Tufted 1/12" gauge loop	Tufted 1/12" gauge loop	Tufted 1/12" gauge loop	Tufted 1/12" gauge loop
100% Colorstrand® Premium Nylon (40% recycled content) 100% solution dyed Pa6	100% Colorstrand® Premium Nylon (40% recycled content) 100% solution dyed Pa6	100% Colorstrand® Premium Nylon (40% recycled content) 100% solution dyed Pa6	100% Colorstrand® Premium Nylon (40% recycled content) 100% solution dyed Pa6
EcoFlex™ Statera (modified bitumen, 70% recycled content)	EcoFlex™ Statera (modified bitumen, 70% recycled content)	EcoFlex™ Statera (modified bitumen, 70% recycled content)	EcoFlex™ Statera (modified bitumen, 70% recycled content)
± 4400 g/m ²	± 4500 g/m ²	± 4500 g/m ²	± 4500 g/m ²
± 620 g/m ²	± 600 g/m ²	± 600 g/m ²	± 600 g/m ²
± 430 g/m ²	± 389 g/m ²	± 395 g/m ²	± 395 g/m ²
± 6,5 mm	± 7,1 mm	± 7 mm	± 7 mm
± 3,2 mm	± 3,6 mm	± 3,5 mm	± 3,5 mm
± 0,136 g/cm ³	± 0,107 g/cm ³	± 0,113 g/cm ³	± 0,113 g/cm ³
210.000/m ²	209.100/m ²	214.200/m ²	214.200/m ²
33 / LC2	33 / LC1	33 / LC1	33 / LC1
A: intensive use	A: intensive use	A: intensive use	A: intensive use
Bfl-s1	Bfl-s1	Bfl-s1	Bfl-s1
≤ 0,2%	≤ 0,2%	≤ 0,2%	≤ 0,2%
≥ 7	≥ 7	≥ 7	≥ 7
≥ 4	≥ 4	≥ 4	≥ 4
≥ 4	≥ 4	≥ 4	≥ 4
0,0679 m ² .K/W	0,077 m ² .K/W	0,076 m ² .K/W	0,076 m ² .K/W
0,15 aw	0,15 aw	0,15 aw	0,15 aw
Hz 125 250 500 1000 2000 4000 as 0 0,02 0,07 0,22 0,34 0,37	Hz 125 250 500 1000 2000 4000 as 0 0,05 0,05 0,15 0,3 0,3	Hz 125 250 500 1000 2000 4000 as 0 0 0,1 0,15 0,3 0,35	Hz 125 250 500 1000 2000 4000 aw 0 0 0,05 0,15 0,3 0,35
ΔLw = 27 dB	ΔLw = 26 dB	ΔLw = 28 dB	ΔLw = 29 dB
≤ 2 kV	≤ 2 kV	≤ 2 kV	≤ 2 kV
6	6	12	6
25 x 75 cm 3,75 m ² /box - 24 boxes/pallet	25 x 75 cm 3,75 m ² /box - 24 boxes/pallet	25 x 75 cm 3,75 m ² /box - 24 boxes/pallet	25 x 75 cm 3,75 m ² /box - 24 boxes/pallet
D5A2E370	6A8A980E	6D12A97A	68365BF5
15	15	15	15

Technical Specifications

Spécifications techniques - Technische specificaties - Technische Spezifikationen

Construction Structure - Structuur - Konstruktion	
Pile fibre composition Composition des fibres - Poolmateriaal - Material der Polnutschicht	
Secondary backing Envers - Rug - Beschichtung	
Total weight Poids total - Totaal gewicht - Gesamtgewicht	
Pile weight Poids du velours - Poolgewicht - Poleinsatzgewicht	
Surface pile weight Poids du velours utile - Effectieve poolmassa - Polnutschichtgewicht	
Total thickness Epaisseur totale - Totale dikte - Gesamtdicke	
Surface pile thickness Hauteur du velours - Poolhoogte - Poldicke	
Surface pile density Densité du velours - Pooldichtheid - Polrohdichte	
Number of tufts Nombre de boucles - Aantal noppen - Noppenzahl	
Wear classification Classement d'usage - Gebruiksklasse - Beanspruchungsklasse	EN 1307
Castor chair suitability Résistance aux chaises à roulettes - Rolstoelgeschiktheid - Stuhllangleignung	EN 985
Fire classification Comportement au feu - Brandgedrag - Brandklasse	EN 13501-1
Dimensional stability Stabilité dimensionnelle - Dimensionele stabiliteit - Dimensionsstabilität	EN 986
Colour fastness to light Solidité des couleurs à la lumière - Lichtbestendigheid van de kleuren - Lichtechtheit	EN ISO 105-B02
Rubbing fastness Solidité au frottement - Wrijftechtheid - Reibechtheit	EN ISO 105-X12
Colour fastness to water Solidité à l'eau - Waterechtheid - Wasserechtheit	EN ISO 105-E01
Thermal resistance Résistance thermique - Warmtedoorlaatweerstand - Wärmedurchlasswiderstand	ISO 8302
Sound absorption Absorption phonique - Geluidsabsorptie - Schallabsorptionsgrad	EN ISO 354
Impact sound reduction Réduction phonique aux bruits d'impacts - Reductie contactgeluid - Trittschallverbesserungsmaß	EN ISO 10140-3
Permanent antistatic Antistatique permanent - Permanent antistatisch - Permanent antistatisch	ISO 6356
Number of colours Nombre de coloris - Aantal kleuren - Anzahl der Farben	
Size & Packaging Dimensions & Emballage - Formaat en verpakking - Abmessungen & Verpackung	
GUT-Prodís Number Numéro GUT Prodís - Nummer GUT Prodís - GUT-Prodís Nummer	
Warranty years Garantie ans - Garantie in jaren - Garantie Jahren	



Balanced Hues	Perspective	View	Grit
Tufted 1/12" gauge loop	Tufted 1/12" gauge loop	Tufted 1/12" gauge loop	1/12" Pattern Perfect®
100% Colorstrand® Premium Nylon (40% recycled content) 100% solution dyed Pa6	100% solution dyed nylon	100% solution dyed nylon	ECONYL® 100% regenerated nylon
EcoFlex™ Statera (modified bitumen, 70% recycled content)	EcoFlex™ Statera (modified bitumen, 70% recycled content)	EcoFlex™ Statera (modified bitumen, 70% recycled content)	EcoFlex™ Echo (94% recycled felt)
± 4500 g/m ²	± 4400 g/m ²	± 4400 g/m ²	± 5265 g/m ²
± 720 g/m ²	± 600 g/m ²	± 600 g/m ²	± 750 g/m ²
± 483 g/m ²	± 380 g/m ²	± 388 g/m ²	± 510 g/m ²
± 7 mm	± 6,4 mm	± 6,4 mm	± 8,6 mm
± 3,9 mm	± 3,1 mm	± 3,1 mm	± 3,2 mm
± 0,125 g/cm ³	± 0,123 g/cm ³	± 0,125 g/cm ³	± 0,159 g/cm ³
244.800/m ²	209.100/m ²	229.500/m ²	± 132.080/ m ²
33 / LC2	33 / LC1	33 / LC1	33 / LC2
A: intensive use	A: intensive use	A: intensive use	A: intensive use
Bfl-s1	Bfl-s1	Bfl-s1	Bfl-s1
≤ 0,2%	≤ 0,2%	≤ 0,2%	≤ 0,2%
≥ 7	≥ 7	≥ 7	≥ 7
≥ 4	≥ 4	≥ 4	≥ 4
≥ 4	≥ 4	≥ 4	≥ 4
0,0798 m ² .K/W	0,068m ² .K/W	0,067m ² .K/W	0,115 m ² .K/W
0,20 aw	0,15 aw	0,15 aw	0,25 aw
Hz 125 250 500 1000 2000 4000 as 0,00 0,02 0,08 0,24 0,36 0,40	Hz 125 250 500 1000 2000 4000 as 0,00 0,02 0,06 0,20 0,33 0,42	Hz 125 250 500 1000 2000 4000 as 0,00 0,02 0,06 0,20 0,30 0,39	Hz 125 250 500 1000 2000 4000 as 0,00 0,03 0,43 0,20 0,28 0,39
ΔLw = 28 dB	ΔLw = 25 dB	ΔLw = 25 dB	ΔLw = 29 dB
≤ 2 kV	≤ 2 kV	≤ 2 kV	≤ 2 kV
16	8	8	12
50 x 50 cm 4,5 m ² /box - 24 boxes/pallet	50 x 50 cm 5 m ² /box - 24 boxes/pallet	50 x 50 cm 5 m ² /box - 24 boxes/pallet	25 x 100 cm 4 m ² /box - 24 boxes/pallet
FA52FF8B	Ongoing	Ongoing	Ongoing
15	15	15	15

Technical Specifications

Spécifications techniques - Technische specificaties - Technische Spezifikationen

Construction Structure - Structuur - Konstruktion	
Pile fibre composition Composition des fibres - Poolmateriaal - Material der Polnutschicht	
Secondary backing Envers - Rug - Beschichtung	
Total weight Poids total - Totaal gewicht - Gesamtgewicht	
Pile weight Poids du velours - Poolgewicht - Poleinsatzgewicht	
Surface pile weight Poids du velours utile - Effectieve poolmassa - Polnutschichtgewicht	
Total thickness Epaisseur totale - Totale dikte - Gesamtdicke	
Surface pile thickness Hauteur du velours - Poolhoogte - Poldicke	
Surface pile density Densité du velours - Pooldichtheid - Polrohdichte	
Number of tufts Nombre de boucles - Aantal noppen - Noppenzahl	
Wear classification Classement d'usage - Gebruiksklasse - Beanspruchungsklasse	EN 1307
Castor chair suitability Résistance aux chaises à roulettes - Rolstoelgeschiktheid - Stuhllangleignung	EN 985
Fire classification Comportement au feu - Brandgedrag - Brandklasse	EN 13501-1
Dimensional stability Stabilité dimensionnelle - Dimensionele stabiliteit - Dimensionsstabilität	EN 986
Colour fastness to light Solidité des couleurs à la lumière - Lichtbestendigheid van de kleuren - Lichtechtheit	EN ISO 105-B02
Rubbing fastness Solidité au frottement - Wrijftechtheid - Reibechtheit	EN ISO 105-X12
Colour fastness to water Solidité à l'eau - Waterechtheid - Wasserechtheit	EN ISO 105-E01
Thermal resistance Résistance thermique - Warmtedoorlaatweerstand - Wärmedurchlasswiderstand	ISO 8302
Sound absorption Absorption phonique - Geluidsabsorptie - Schallabsorptionsgrad	EN ISO 354
Impact sound reduction Réduction phonique aux bruits d'impacts - Reductie contactgeluid - Trittschallverbesserungsmaß	EN ISO 10140-3
Permanent antistatic Antistatique permanent - Permanent antistatisch - Permanent antistatisch	ISO 6356
Number of colours Nombre de coloris - Aantal kleuren - Anzahl der Farben	
Size & Packaging Dimensions & Emballage - Formaat en verpakking - Abmessungen & Verpackung	
GUT-Prodís Number Numéro GUT Prodis - Nummer GUT Prodis - GUT-Prodís Nummer	
Warranty years Garantie ans - Garantie in jaren - Garantie Jahren	



Bruut	Rupture	Basalt	Jute
1/12" Pattern Perfect®	1/12" Pattern Perfect®	Tufted 1/12" gauge loop	Tufted 1/12" gauge loop
ECONYL® 100% regenerated nylon	ECONYL® 100% regenerated nylon	100% solution dyed nylon	100% solution dyed nylon
EcoFlex™ Echo (94% recycled felt)	EcoFlex™ Echo (94% recycled felt)	EcoFlex™ Statera (modified bitumen, 70% recycled content)	EcoFlex™ Statera (modified bitumen, 70% recycled content)
± 5295 g/m ²	± 5295 g/m ²	± 4400 g/m ²	± 4400 g/m ²
± 780 g/m ²	± 780 g/m ²	± 600 g/m ²	± 600 g/m ²
± 498 g/m ²	± 486 g/m ²	± 390 g/m ²	± 415 g/m ²
± 8,7 mm	± 8,7 mm	± 6,4 mm	± 6,4 mm
± 3,3 mm	± 3,3 mm	± 3,1 mm	± 3,2 mm
± 0,151 g/cm ³	± 0,147 g/cm ³	± 0,125 g/cm ³	± 0,127 g/cm ³
± 132.080/ m ²	± 132.080/ m ²	224.400/m ²	224.400/m ²
33 / LC2	33 / LC2	33 / LC1	33 / LC2
A: intensive use	A: intensive use	A: intensive use	A: intensive use
Bfl-s1	Bfl-s1	Bfl-s1	Bfl-s1
≤ 0,2%	≤ 0,2%	≤ 0,2%	≤ 0,2%
≥ 7	≥ 7	≥ 7	≥ 7
≥ 4	≥ 4	≥ 4	≥ 4
≥ 4	≥ 4	≥ 4	≥ 4
0,120 m ² .K/W	0,114 m ² .K/W	0,066 m ² .K/w	0,069 m ² .K/W
0,30 aw	0,30 aw	0,15 aw	0,15 aw
Hz 125 250 500 1000 2000 4000 as 0,00 0,03 0,33 0,25 0,36 0,55	Hz 125 250 500 1000 2000 4000 as 0,01 0,03 0,37 0,24 0,35 0,55	Hz 125 250 500 1000 2000 4000 aw 0,02 0,03 0,08 0,16 0,29 0,33	Hz 125 250 500 1000 2000 4000 aw 0,02 0,02 0,07 0,16 0,29 0,33
ΔLw = 31 dB	ΔLw = 30 dB	ΔLw = 28 dB	ΔLw = 28 dB
≤ 2 kV	≤ 2 kV	≤ 2 kV	≤ 2 kV
12	12	12	12
25 x 100 cm 4 m ² /box - 24 boxes/pallet	25 x 100 cm 4 m ² /box - 24 boxes/pallet	50 x 50 cm 5 m ² /box - 24 boxes/pallet	50 x 50 cm 5 m ² /box - 24 boxes/pallet
Ongoing	Ongoing	65EB708B	94EFCC68
15	15	15	15

Teak	Clay	Clay Create	Step Up
Tufted 1/12" gauge loop	Tufted 1/12" gauge loop	Tufted 1/12" gauge loop	5/32" Tip Sheared
100% solution dyed nylon	100% solution dyed nylon	100% solution dyed nylon	100% Duracolor® Premium Nylon (30% recycled content)
EcoFlex™ Statera (modified bitumen, 70% recycled content)	EcoFlex™ Statera (modified bitumen, 70% recycled content)	EcoFlex™ Statera (modified bitumen, 70% recycled content)	EcoFlex™ NXT
± 4400 g/m ²	± 4500 g/m ²	± 4500 g/m ²	± 4575 g/m ²
± 600 g/m ²	± 600 g/m ²	± 600 g/m ²	± 1288 g/m ²
± 370 g/m ²	± 384 g/m ²	± 384 g/m ²	± 754 g/m ²
± 6,4 mm	± 7,1 mm	± 7,1 mm	± 9 mm
± 2,9 mm	± 3,4 mm	± 3,4 mm	± 5,2 mm
± 0,127 g/cm ³	± 0,115 g/cm ³	± 0,115 g/cm ³	± 0,145 g/cm ³
224.400/m ²	205.000/ m ²	205.000/ m ²	93.600/m ²
33 / LC1	33 / LC1	33 / LC1	33 / LC3
A: intensive use	A: intensive use	A: intensive use	A: intensive use
Bfl-s1	Bfl-s1	Bfl-s1	Bfl-s1
≤ 0,2%	≤ 0,2%	≤ 0,2%	≤ 0,2%
≥ 7	≥ 7	≥ 7	≥ 7
≥ 4	≥ 4	≥ 4	≥ 4
≥ 4	≥ 4	≥ 4	≥ 4
0,065 m ² .K/W	0,076 m ² .K/W	0,076 m ² .K/W	0,099 m ² .K/W
0,15 aw	0,15 aw	0,15 aw	In progress
Hz 125 250 500 1000 2000 4000 aw 0,01 0,03 0,07 0,16 0,29 0,33	Hz 125 250 500 1000 2000 4000 as 0,02 0,03 0,07 0,19 0,34 0,57	Hz 125 250 500 1000 2000 4000 as 0,02 0,03 0,07 0,19 0,34 0,57	
ΔLw = 28 dB	ΔLw = 28 dB	ΔLw = 28 dB	ΔLw = 29dB
≤ 2 kV	≤ 2 kV	≤ 2 kV	≤ 2 kV
12	12	12	4
50 x 50 cm 5 m ² /box - 24 boxes/pallet	25 x 100 cm 5 m ² /box - 24 boxes/pallet	25 x 100 cm 5 m ² /box - 24 boxes/pallet	60,96 cm x 60,96 cm (24"x24") 5,2 m ² /box
AB56D646	E4C2F79C	5E8698AB	In progress
15	15	15	15

Photographic images are not representative due to variations in colour printing.
The representative samples shown are sectional definitions. For full design representation, please visit the website.





www.ivc-commercial.com



