

**Amplitude**  
Soundabsorbing Ceiling Panel

**asset**  
space becomes place



# AMPLITUDE

## CEILING SYSTEM

ezo  
bord



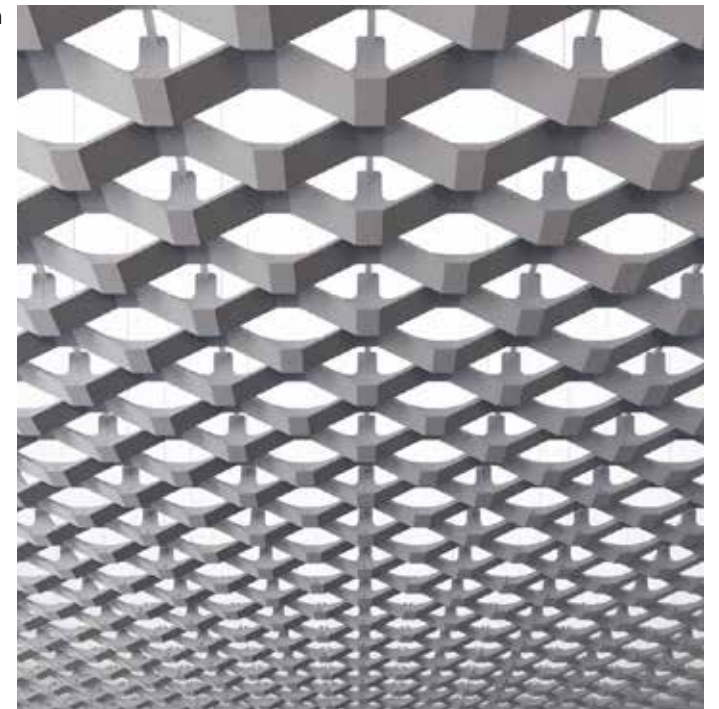


## MEET AMPLITUDE

Wave pattern



Weave pattern



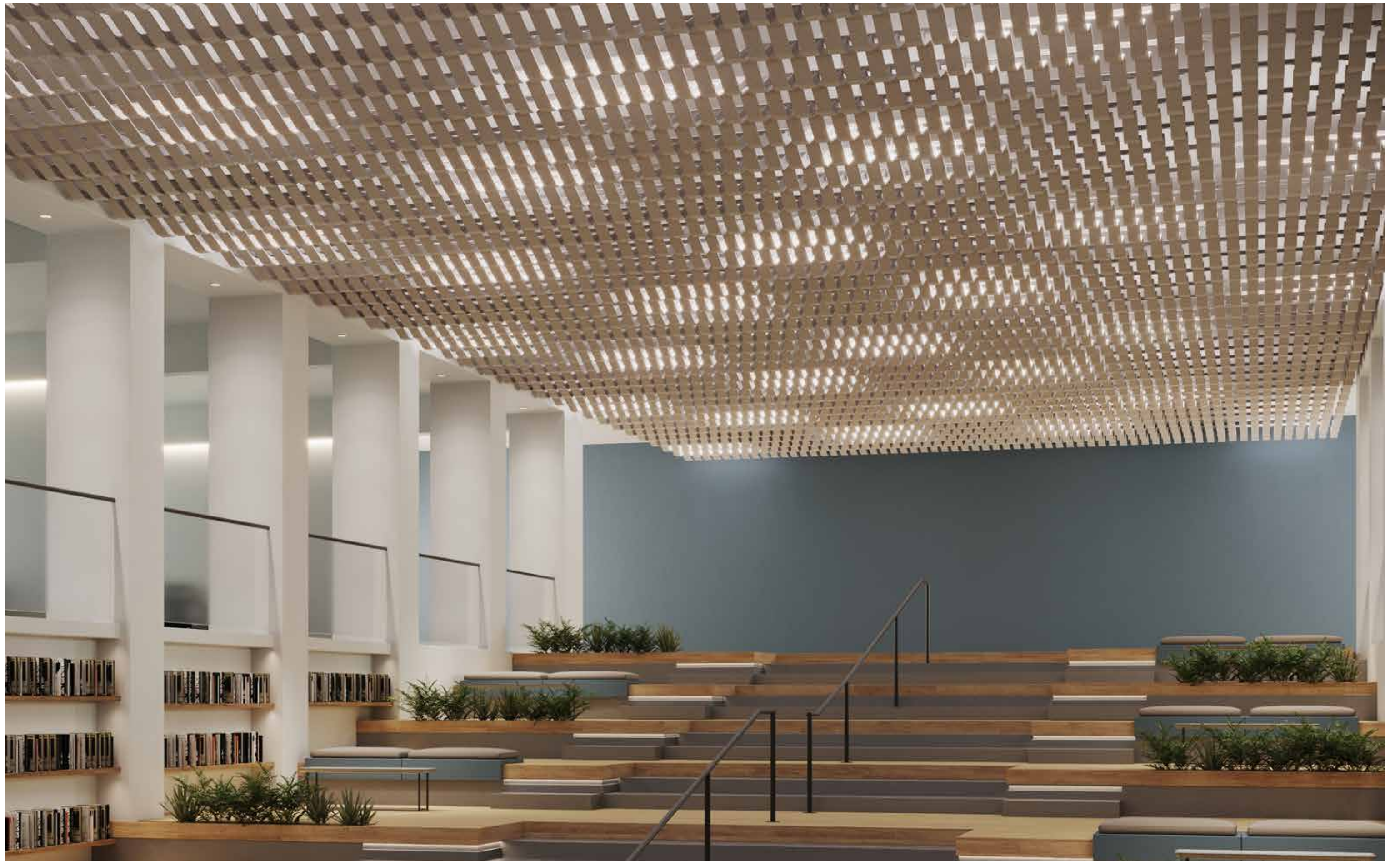
### Amplitude Goes Above and Beyond

Amplitude is an expansive 3-dimensional modular, acoustic ceiling system that exudes personality. It can extend linearly in two directions with various finish options within recessed or flush ceiling applications. Patterned to create that grand entrance, Amplitude is designed to adorn large areas including theatres, banquet halls, corporate lobbies, and educational centers.

Amplitude comes in two patterns. **Weave** embraces ceiling structures with an oscillating pattern that generates an intersecting ripple effect that can be repeated to generously extend its coverage over an entire ceiling. **Wave** arches and rises and then descends uniformly to deliver a streamlined pattern effect. Both can be outfitted inside of bulkheads or applied to open ceiling applications, in modular applications, or wall to wall spans. Made with lightweight and sustainable EzoBord material that is acoustically optimized to support voice clarity, Amplitude provides textured relief by bridging the gap between thin profile ceiling systems and large flat panel products.

Installation of the Amplitude system is fast and easy, as it is designed to mount directly onto any conventional T bar ceiling grid system. Its lightweight design means that it can be installed with minimal disruption to the space and can be easily reconfigured if needed. With its superior acoustics, fire-resistant properties, and versatility, the Amplitude 3-dimensional acoustical ceiling system is a must-have for anyone looking to create a functional and visually stunning environment.

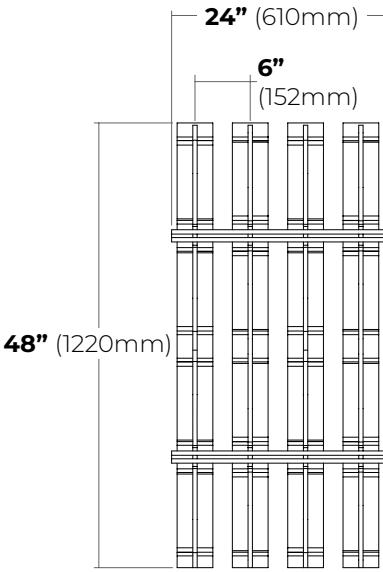




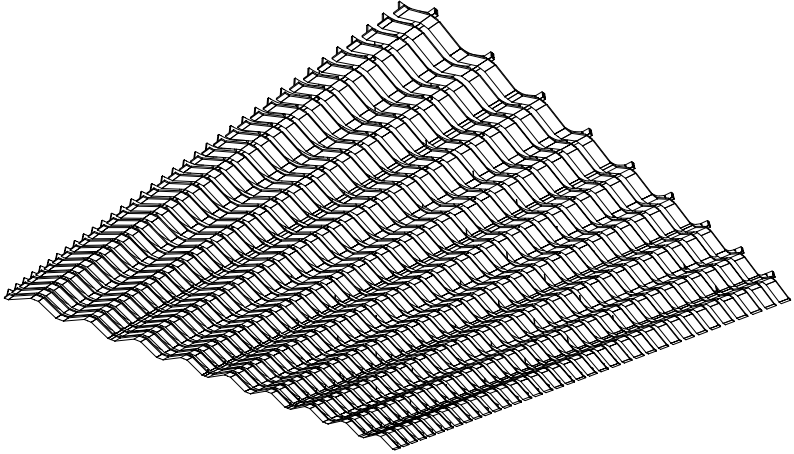


# WAVE PATTERN

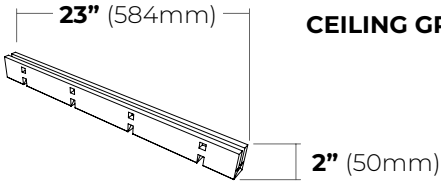
**BAFFLE MODULE**



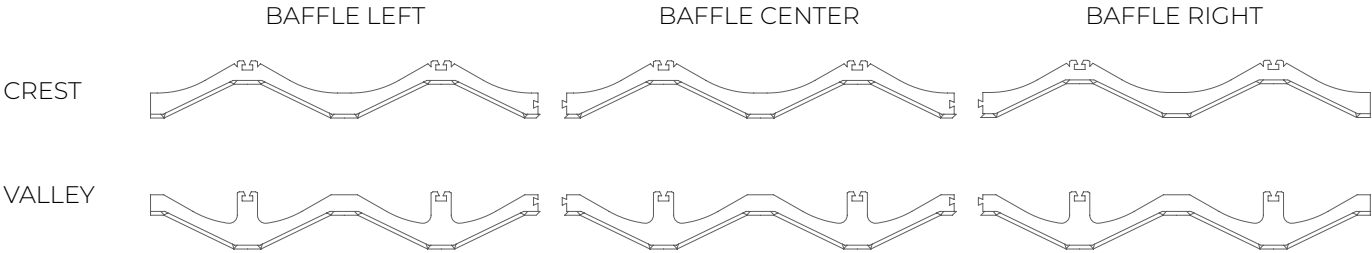
**CLOUD**



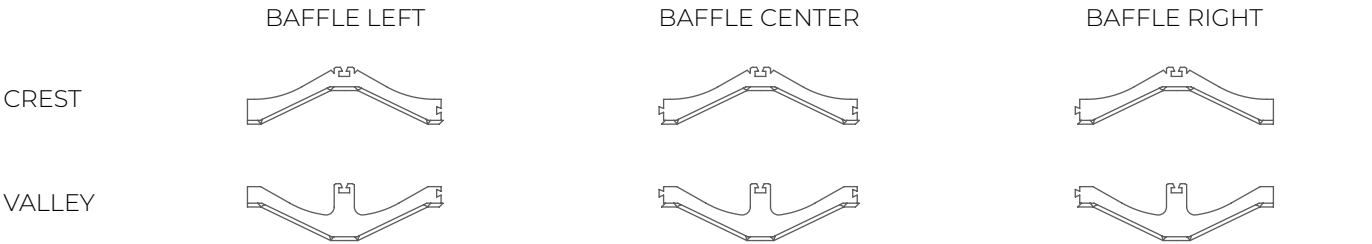
**CEILING GRID SPACER TRIM**



**48" (1220mm) BAFFLE**



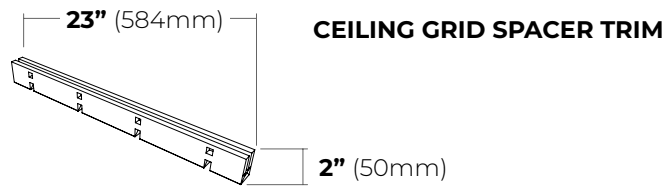
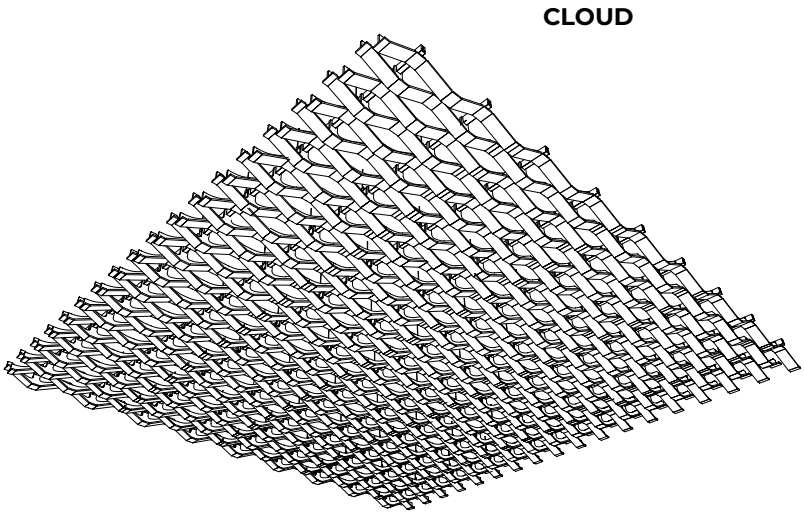
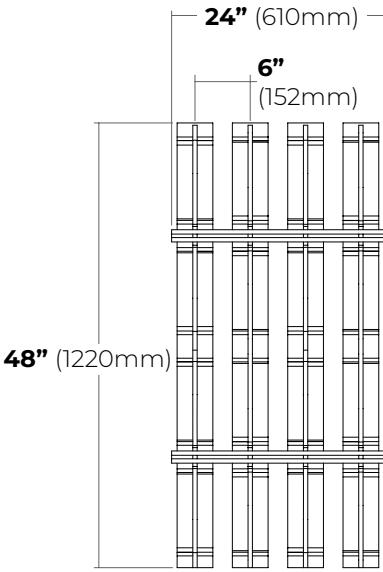
**24" (610mm) BAFFLE**



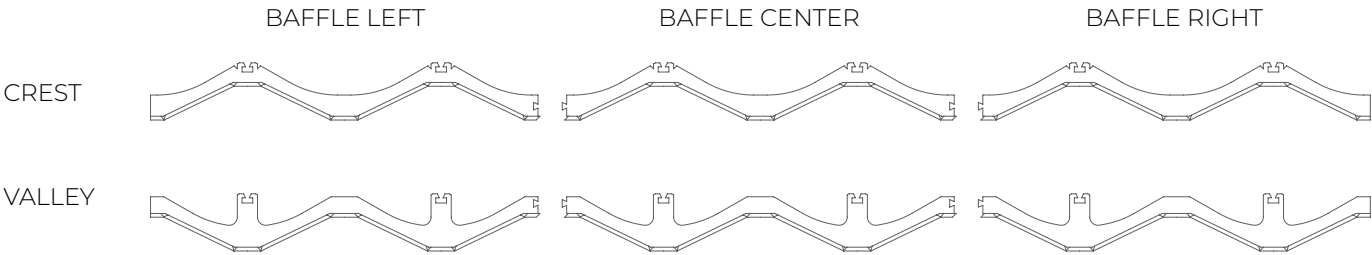


# WEAVE PATTERN

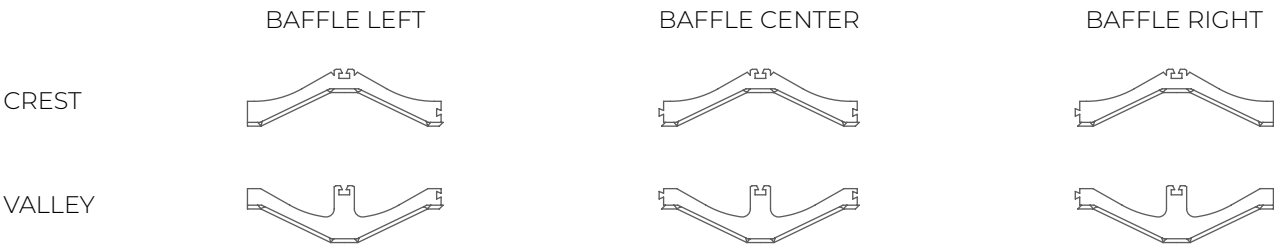
**BAFFLE MODULE**



**48" (1220mm) BAFFLE**



**24" (610mm) BAFFLE**





# SPECIFICATIONS

**COMPOSITION**

**100% PET** (min. %50 recycled content)

**PRODUCT VARIANCES**

Variation in fiber mix and colour may occur. All products will be supplied within commercial tolerances.

**CLEANING**

Remove dust and dirt with a stiff plastic bristle brush. Distilled water can be used to remove stains. Always use a soft, clean cloth and blot dry. Vacuuming works great as well.

**FIRE TESTING**

**NORTH AMERICA:**

- ASTM E-84 Class A\*
- CAN ULC S102-10

**EUROPE AND UK:**

- EN13501-1: 2007

*Sprinkler systems should be positioned through the Amplitude ceiling product in accordance with local regulations*

**ENVIRONMENT**

Made of polyester fiber, min. 50% of which comes from recycled water bottles which contributes to LEED MR Credit and BREEAM Health and Wellbeing, Materials points due to recycled content, acoustic performance, and low emitting materials. No VOC's: CDPH v1.2 and REACH SVHC Compliant.

**USGBC LEED V4 CREDITS**

While individual products do not 'earn' LEED credits, EzoBord can contribute to the following LEED v4 Credits. Please refer to the USGBC LEED credit guides for detailed requirements.

- EQc9 for enhancing acoustic performance
- MRc3 BPDO for sourcing of raw materials for recycled contribution
- EQc6 interior lighting for surface reflectance (lighter color options).

*\* Upon request, 1/2"(12mm) sheet material is treated with USA origin post-production flame retardant to Class A surface burning characteristics. Post sheet production FR treatment does not contain any Red List Restricted Chemicals and complies with California Proposition 65. Contact customer service for technical information, test data and safety data sheets for flame retardant*

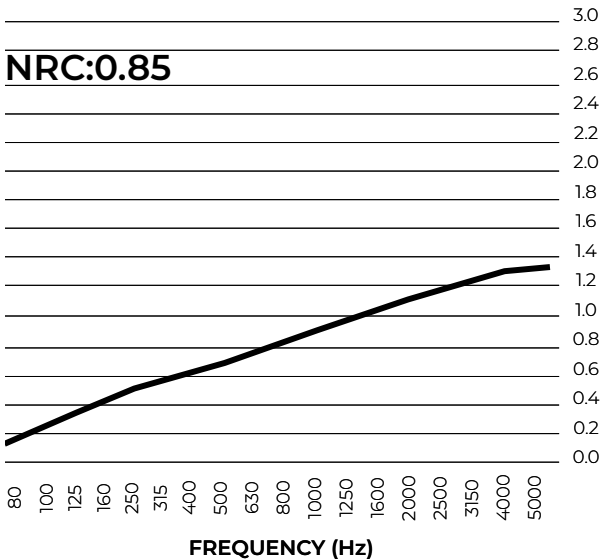
**ACOUSTICS**

Refer to ASTM C423 test chart for specific absorption rates/frequency.  
 1/2" (12mm): NRC 0.85  
*(subject to mounting conditions and geometrical properties)*

**SOUND ABSORPTION COEFFICIENTS**

ASTM C423-17

NRC	SAA	125	250	500	1000	2000	4000
0.85	0.82	0.37	0.55	0.70	0.92	1.13	1.28



*Open café space displays Weave pattern configured into separate ceiling quadrants, creating a patchwork of intersecting horizontal and vertical lines.*





# COLOR & FINISHES

EZOBORD BASE MATERIAL

OPTIONAL EZOPRINT SURFACE FINISH



## EZOBORD BASE COLORS

EZOBORD COLORS 1/2" (12mm)



## EZOPRINT

STANDARD WOODGRAIN



CUSTOM EZOPRINT



YOUR IMAGE

\* EZOPRINT finishes can be applied over EZOBORD Light Beige, Desert Sand, Classic White, Polar Ice base colors.





# ENVIRONMENT

## Our Commitment to the Environment

There are approximately 50 billion water bottles consumed around the world each year, and only about half of those get recycled. The rest end up in landfills, littered through our neighborhoods, or floating in our oceans.

Bottled water consumption has more than doubled since 2000; in 2015 there was the equivalent of more than 5 bottles of water consumed for every person in the USA every single week. This, of course, means that the amount of oil required to produce the energy used for the water bottling process continues to grow.

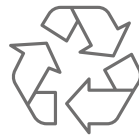
In 2007, the last year global statistics of oil consumption were available, between 32 million and 54 million barrels of oil were used to produce the bottled water that was consumed in the USA alone. This energy is used to make the bottles from PET pellets (1 million tons in the USA), treat water, bottle the water, label the bottles, and transport the bottled water. Most of the energy consumption occurs in the creation of the bottles themselves. To help in the lifecycle of this plastic product, we have chosen to manufacture our material so that it recycles these PET bottles. We are doing our part to reduce the waste. This acoustical and tackable material is made from PET bottles in a zero-waste process with postindustrial recycling. An environmentally friendly, sustainable, and waste reduced alternative to traditional acoustical/tackable material that looks great in any office, education, or open space installation.

## EzoBord is



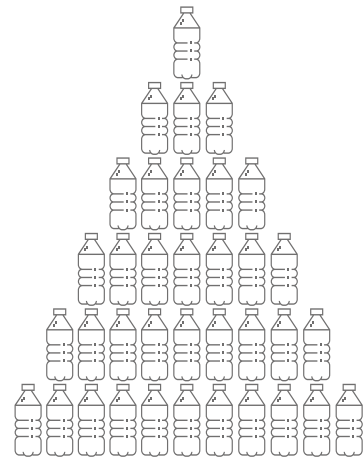
- low VOC
- formaldehyde free

## DID YOU KNOW...



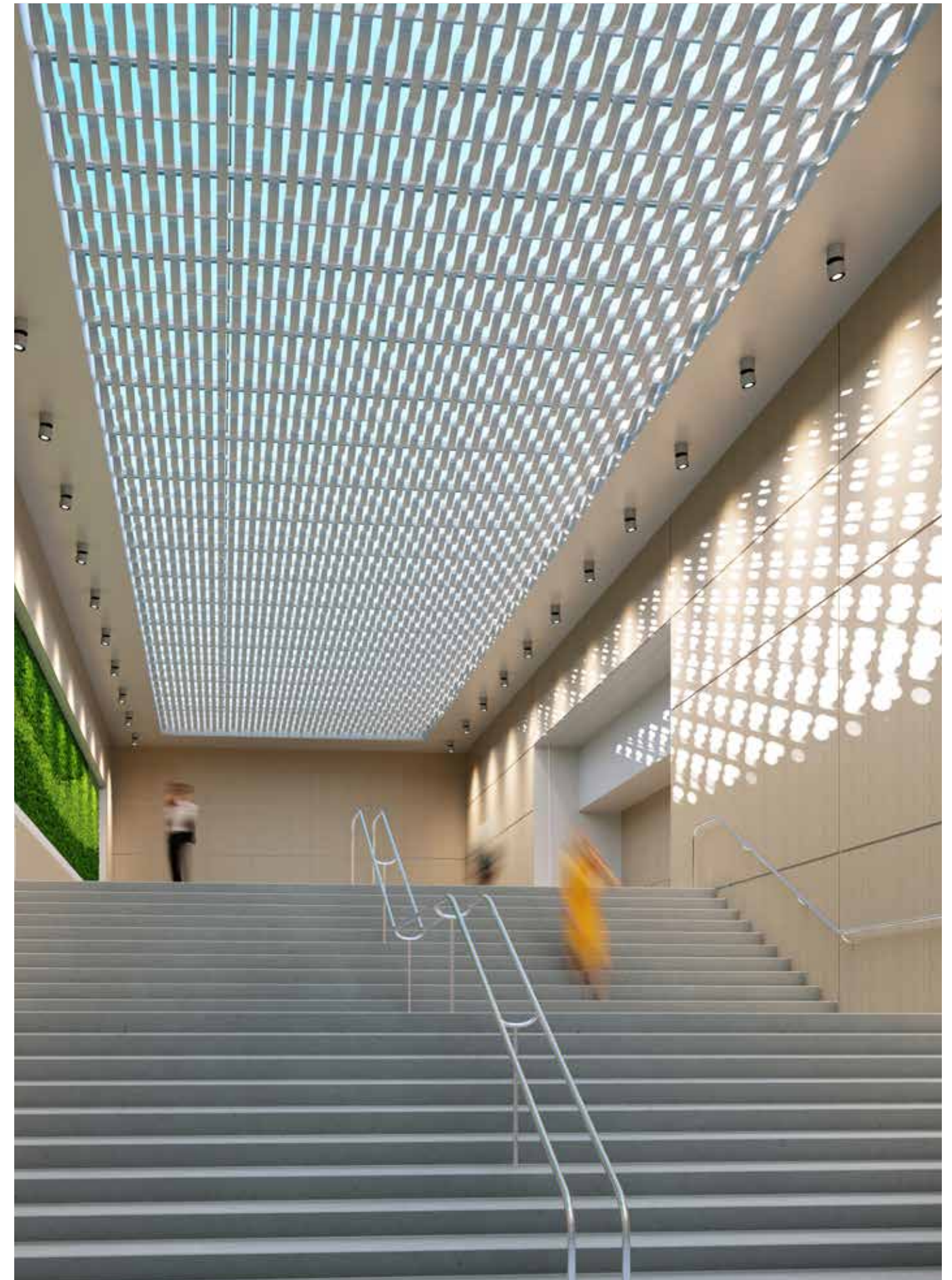
For every pound of recycled PET bottles (approximately 23) energy use is reduced by 84% and greenhouse gas emissions are reduced by 71%.

## PET BOTTLES



± 166 pet bottles are used to make one  $\frac{3}{8}$ " 9mm thick EzoBord sheet.

± 318 pet bottles are used to make one  $\frac{1}{2}$ " 12mm thick EzoBord sheet.







DESIGN  
DRIVEN  
ACOUSTICS

## CANADA

---

### Ayrsonics Inc - Ontario

825 Trillium Drive  
Kitchener, Ontario N2R 1J9  
844-441-1122  
sales@ayrsonics.com

### Ayrsonics Inc - Alberta

292236 Nose Creek Boulevard  
Building 1B, Unit #19  
Rocky View County, AB T4A 3N7  
844-441-1122  
sales@ayrsonics.com

### EzoBord Corporate Office

6845 Rexwood Road, Unit 7  
Mississauga, ON L4V 1S5  
416-665-3571  
info@ezobord.com

## UNITED STATES

---

### Ayrsonics Midwest LLC

820 Tollgate Road  
Elgin, IL 60123  
800-517-0686  
sales.amw@ayrsonicsusa.com

### Ayrsonics Southwest LLC

8934 Eton Ave  
Canoga Park, CA 91304  
213-833-9700  
sales.asw@ayrsonicsusa.com

### Ayrsonics Southeast LLC

15 Enterprise Way  
Dahlonega, GA 30533  
706-539-4711  
sales.ase@ayrsonicsusa.com

## UNITED KINGDOM

---

### EzoBord UK Limited

Unit 20, Westwood Business Park  
Margate, Kent. CT9 4JJ  
+44 1843-264027  
sales@ezobord.co.uk

## IRELAND

---

### EzoBord Ireland Limited

Inniscarra, Main Street,  
Rathcoole, Co. Dublin,  
D24 EO29, Ireland  
+353 1485-4774  
sales@ezobord.ie

## CENTRAL & LATIN AMERICA

---

### EzoBord Costa Rica SRL

100 Sur 25 Oeste Recope  
Bodega #16 Ochomogo, Cartago  
+506 8842-4613  
info-ebcr@ezobord.com

### EzoBord - LATAM

Buenos Aires, Argentina  
+54 9 11 5657-1793  
info-latam@ezobord.com

FOLLOW US    



