

**Move & lead**  
Executive Desk

**asset**  
space becomes place

# MOVE&LEAD executive desks

Design by Gediminas Juška | Lithuania



## FEATURES

- Unique design by Gediminas Juška
- Height adjustment: minimum height 735 mm, maximum 1300 mm
- Fixed height – 740 mm
- Smart cable management
- Built-in 4 power slots – 230V/110V AC output and optional wireless charger

## TECHNICAL INFORMATION

### Desktop

- 27 mm MDF covered in HPL with sloping edges painted same colour as desktop;
- Short sloping edges have 45° angle and the long ones 18° angle.

### Desktop types

- Desktop with a star type cut-out for extraordinary grommet and wire management;
- Desktop with a star type cut-out for extraordinary grommet and wire management, with built in wireless charging dock.

### Internal leg\*

- 12 mm plywood covered in HPL with brushed stainless steel.

### External leg

- 12 mm plywood covered in HPL (external leg side) and lacquered veneer (inner leg side);
- Black plastic height levelling feet, H=10 mm (+5 mm).

### Lid under the desktop

- 12 mm plywood covered with lacquered veneer.

### Wire management and power connectivity

- The electricity supply for the sit-stand desk comes via external leg;
- Unique star type cut-out with removable 12 mm HPL / veneer cover;
- Lid under the desktop with access to hidden power sockets and cable management;
- Built-in power sockets for desk and external devices. 2-3 slots for sit-stand desk or 3-4 slots for fixed height desk will be free to use depending on the desk configuration (with or without wireless charging dock).

### Inner metal frame

- Metal tube – 50x20 mm;
- Powder coated metal, black colour by default.

### Lifting columns\*

- Anti-collision feature;
- Two motors;
- Soft start and soft stop;
- Lifting speed: up to 38 mm/sec;
- Maximum desk lifting capacity (desktop included): 80 kg.

### Desk control button type – LA\*

- Up and down drive;
- 2 memory positions;
- Automatic drive on memory position;
- LED reminder;
- Integrated Bluetooth.

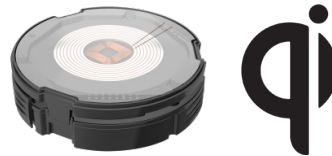


### Control box\*

- Input: 110-240V;
- Frequency: 50/60Hz;
- Output: 18V;
- Power Plug: EU, UK, CH, FR, US;
- Energy consumption: standby 0,01W;
- Operating Cycle: 1 minute on, 9 minutes off.

### Fast Qi Wireless charger (built-in under the desktop):

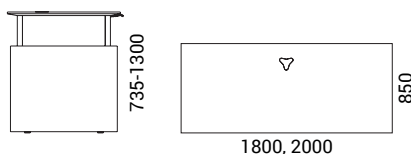
- Output: 15W charging;
- Qi certified.
- The charger may not work properly if the phone has a thick case, if the case is metalized, if it has a card holder with cards in it, or if the camera significantly protrudes from the phone.



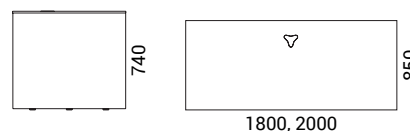
\*Only for sit-stand desks.

## RANGE

Sit-stand desk with or without Qi Wireless charger



Fixed height desk with or without Qi Wireless charger



### Optional



Right fixed pedestal



Left fixed pedestal

